

Product datasheet for **AP20597PU-N**

BMP2 (aa 261-290) Rabbit Polyclonal Antibody

Product data:

Product Type:	Primary Antibodies
Applications:	IHC, WB
Recommended Dilution:	Western blot: 1/500-1/1000. Immunohistochemistry on Paraffin Sections: 1/50-1/200.
Reactivity:	Human, Mouse, Rat
Host:	Rabbit
Clonality:	Polyclonal
Immunogen:	Synthetic peptide, corresponding to amino acids 261-290 of Human BMP2.
Specificity:	This antibody detects endogenous levels of BMP-2 protein. (region surrounding Pro275)
Formulation:	Phosphate buffered saline (PBS), pH~7.2 State: Aff - Purified State: Liquid purified Ig fraction (> 95% pure by SDS-PAGE) Preservative: 0.05% Sodium Azide
Concentration:	1.0 mg/ml
Purification:	Affinity Chromatography using epitope-specific immunogen
Conjugation:	Unconjugated
Storage:	Store undiluted at 2-8°C for one month or (in aliquots) at -20°C for longer. Avoid repeated freezing and thawing.
Stability:	Shelf life: one year from despatch.
Predicted Protein Size:	~ 44 kDa
Gene Name:	bone morphogenetic protein 2
Database Link:	<u>Entrez Gene 12156 Mouse</u> <u>Entrez Gene 29373 Rat</u> <u>Entrez Gene 650 Human P12643</u>



[View online »](#)

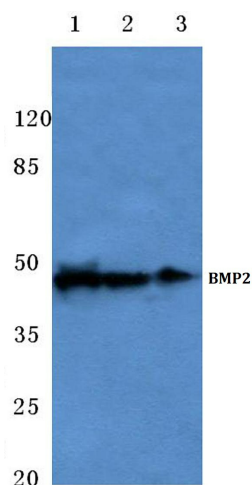
Background: Bone morphogenic proteins (BMPs) are members of the TGFbeta superfamily. BMPs are involved in the induction of cartilage and bone formation. In vivo studies have shown that BMP-2 (also designated BMP-2A) and BMP-3 can independently induce cartilage formation. Smad3 association with the TGFβ receptor complex and Smad1 translocation to the nucleus are observed after the addition of BMP-4 (also designated BMP-2B), suggesting that BMP-4 may play a role in activation of the Smad pathway. BMP-5, BMP-6 and BMP-7 all share high sequence homology with BMP-2, indicating that they each may be able to induce cartilage formation. BMP-8 (also designated OP-2) is thought to be involved in early development, as detectable expression has not been found in adult organs.

Synonyms: Bone morphogenetic protein 2, BMP-2, BMP-2A

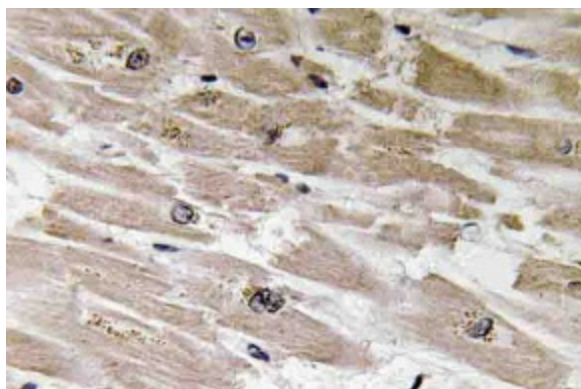
Protein Families: Adult stem cells, Cancer stem cells, Druggable Genome, Embryonic stem cells, ES Cell Differentiation/IPS, Induced pluripotent stem cells, Secreted Protein, Stem cell relevant signaling - TGFb/BMP signaling pathway, Transmembrane

Protein Pathways: Acute myeloid leukemia, Basal cell carcinoma, Cytokine-cytokine receptor interaction, Endocytosis, Hedgehog signaling pathway, Hematopoietic cell lineage, Melanogenesis, Pathways in cancer, TGF-beta signaling pathway

Product images:



Western blot (WB) analysis of BMP2 antibody at 1/500 dilution Lane 1:HEK293T cell lysate Lane 2:Raw264.7 cell lysate Lane 3:PC12 cell lysate



Immunohistochemistry analysis of BMP-2
Antibody in paraffin-embedded human heart
tissue.