

## Product datasheet for **AP20596PU-N**

### IL20 Receptor alpha (IL20RA) Rabbit Polyclonal Antibody

#### Product data:

Product Type:	Primary Antibodies
Applications:	IHC, WB
Recommended Dilution:	<b>Western blot:</b> 1/500-1/1000. <b>Immunohistochemistry on Paraffin Sections:</b> 1/50-1/200.
Reactivity:	Human
Host:	Rabbit
Clonality:	Polyclonal
Specificity:	This antibody detects endogenous levels of IL-20Ralpha protein. (region surrounding Val222)
Formulation:	Phosphate buffered saline (PBS), pH~7.2 State: Aff - Purified State: Liquid purified Ig fraction (> 95% pure by SDS-PAGE). Preservative: 0.05% Sodium Azide
Concentration:	1.0 mg/ml
Purification:	Affinity Chromatography using epitope-specific immunogen.
Conjugation:	Unconjugated
Storage:	Store undiluted at 2-8°C for one month or (in aliquots) at -20°C for longer. Avoid repeated freezing and thawing.
Stability:	Shelf life: one year from despatch.
Predicted Protein Size:	~ 62 kDa
Gene Name:	interleukin 20 receptor subunit alpha
Database Link:	<a href="#">Entrez Gene 53832 Human Q9UHF4</a>



[View online »](#)

**Background:**

The class II cytokine receptor family includes 12 members, 11 of which combine as various heterodimers to transduce signals across the cellular membrane for 27 cytokines. These cytokines are divided into four structurally related groups: six cytokines of the IL-10 family, 17 type I IFNs, one type II IFN and three IFN-lambda. IL-20 is a member of the IL-10 family of cytokines that has been shown to be upregulated in psoriatic skin. The receptor for IL-20 (IL-20R) exists as a dimer consisting of IL-20Ralpha and IL-20Rbeta. IL-20R also functions as a receptor for IL-19, IL-24 and IL-26. It is highly expressed in skin, brain and testis. IL-20, IL-20Ralpha and IL-20Rbeta all have higher expression levels in psoriatic lesional (LS) skin than in nonlesional (NL) skin, suggesting a role for these proteins as potential therapeutic targets. IL-20 can induce signal transducer and activator of transcription (Stat) activation through IL-20R.

**Synonyms:**

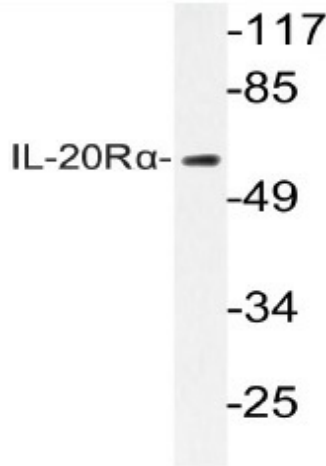
IL-20R-alpha, IL-20R1, ZCYTOR7

**Protein Families:**

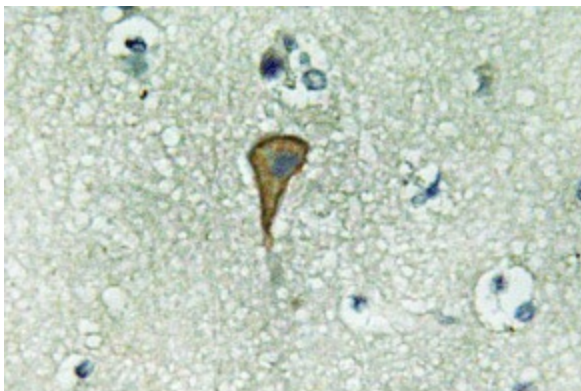
Druggable Genome, Transmembrane

**Protein Pathways:**

Cytokine-cytokine receptor interaction, Jak-STAT signaling pathway

**Product images:**

Western blot (WB) analysis of IL-20R $\alpha$  antibody (Cat.-No.: AP20596PU-N) in extracts from HepG2 cells.



Immunohistochemistry (IHC) analyzes of IL-20Ralpha antibody (Cat.-No.: AP20596PU-N) in paraffin-embedded human brain tissue.