

Product datasheet for **AP20594PU-N**

GJC1 Rabbit Polyclonal Antibody

Product data:

Product Type:	Primary Antibodies
Applications:	IHC, WB
Recommended Dilution:	Western blot: 1/50-1/200. Immunohistochemistry on Paraffin Sections: 1/50-1/200.
Reactivity:	Human, Mouse, Rat
Host:	Rabbit
Clonality:	Polyclonal
Specificity:	This antibody detects endogenous levels of Connexin-45 protein. (region surrounding asn361)
Formulation:	Phosphate buffered saline (PBS), pH~7.2 State: Aff - Purified State: Liquid purified Ig fraction (> 95% pure by SDS-PAGE) Preservative: 0.05% Sodium Azide
Concentration:	1.0 mg/ml
Purification:	Affinity Chromatography using epitope-specific immunogen
Conjugation:	Unconjugated
Storage:	Store undiluted at 2-8°C for one month or (in aliquots) at -20°C for longer. Avoid repeated freezing and thawing.
Stability:	Shelf life: one year from despatch.
Predicted Protein Size:	~45 kDa
Gene Name:	gap junction protein gamma 1
Database Link:	Entrez Gene 14615 Mouse Entrez Gene 266706 Rat Entrez Gene 10052 Human P36383



[View online »](#)

Background:

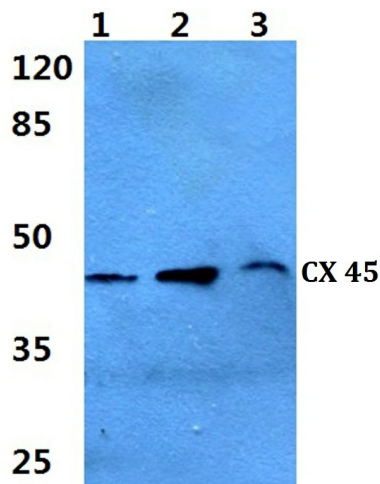
Connexin proteins share a common topology of four transmembrane α -helical domains, two extracellular loops, a cytoplasmic loop and cytoplasmic N- and C-termini. Many of the key functional differences arise from specific amino acid substitutions in the most highly conserved domains, the transmembrane and extracellular regions. Each of the approximately 20 connexin isoforms produces channels with distinct permeabilities and electrical and chemical sensitivities; therefore, one connexin usually cannot fully substitute for another. Consequently, a wide variety of malignant phenotypes associate with decreased connexin expression and gap junction communication, dependent on the particular connexin that is effected. For instance, downregulation of connexin 45 in the left ventricle associates with end-stage heart failure due both to ischaemic cardiomyopathy and idiopathic dilated cardiomyopathy.

Synonyms:

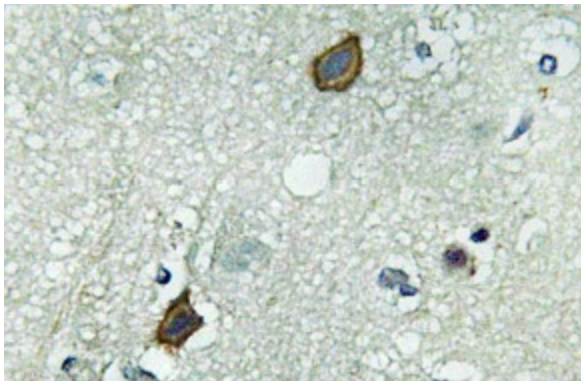
Gap junction gamma-1 protein, Gap junction alpha-7 protein, Connexin-45, GJA7

Protein Families:

Ion Channels: Other, Transmembrane

Product images:


Western blot (WB) analysis of Connexin 45 antibody (Cat.-No.: AP20594PU-N) at 1/500 dilution
 Lane 1: HeLa whole cell lysate
 Lane 2: sp2/20 whole cell lysate
 Lane 3: H9C2 whole cell lysate



Immunohistochemistry analysis of Connexin-45 antibody (Cat.-No.: AP20594PU-N) in paraffin-embedded Human brain tissue.