

## Product datasheet for **AP20591PU-S**

### TRAF3 Rabbit Polyclonal Antibody

#### Product data:

|                         |   |
|-------------------------|---|
| Product Type:           | Primary Antibodies  |
| Applications:           | WB  |
| Recommended Dilution:   | <b>Western blot:</b> 1/500 - 1/1000.  |
| Reactivity:             | Human, Mouse, Rat   |
| Host:                   | Rabbit  |
| Clonality:              | Polyclonal  |
| Specificity:            | This antibody detects endogenous levels of TRAF3 protein.<br>(region surrounding Ser289)  |
| Formulation:            | Phosphate buffered saline (PBS), pH 7.2.<br>State: Aff - Purified<br>State: Liquid purified Ig fraction (> 95% pure by SDS-PAGE).<br>Preservative: 15 mM Sodium Azide |
| Concentration:          | 1.0 mg/ml   |
| Purification:           | Affinity Chromatography using epitope-specific immunogen  |
| Conjugation:            | Unconjugated  |
| Storage:                | Store undiluted at 2-8°C for one month or (in aliquots) at -20°C for longer.<br>Avoid repeated freezing and thawing.  |
| Stability:              | Shelf life: one year from despatch.   |
| Predicted Protein Size: | ~ 68 kDa  |
| Gene Name:              | TNF receptor associated factor 3  |
| Database Link:          | <a href="#">Entrez Gene 22031 Mouse</a> <a href="#">Entrez Gene 362788 Rat</a> <a href="#">Entrez Gene 7187 Human Q13114</a>  |



[View online »](#)

**Background:**

Tumor necrosis factor (TNF)-activated cell signaling is mediated primarily through the TNF receptor 1 (TNF-R1) and, to a lesser extent, TNF-R2. Both TNF receptors are members of the expanding TNF receptor superfamily which includes the Fas antigen and CD40. Potential insight into an understanding of TNF receptor-mediated signaling was provided by the identification of two related proteins, TRAF1 and TRAF2 (for TNF receptor-associated factors 1 and 2, respectively). Both function to form heterodimeric complexes and associate with the cytoplasmic domain of TNF-R2. A third member of this protein family, alternatively designated CD40 bp, CRAF1, LAP1 or TRAF3, has been identified and shown to associate with the cytoplasmic domain of CD40. The similarity between a specific region of TRAF3 with regions of TRAF1 and TRAF2 define a "TRAF-C" domain that is necessary and sufficient for CD40 binding and homodimerization.

**Synonyms:**

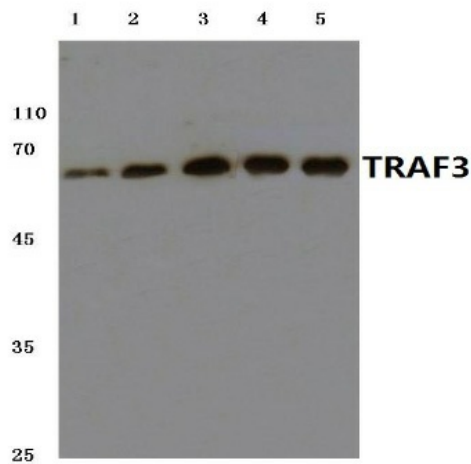
TNF receptor-associated factor 3, CAP1, CAP-1, LMP1-associated protein, LAP1, CD40-binding protein, CD40BP

**Protein Families:**

Druggable Genome

**Protein Pathways:**

Pathways in cancer, RIG-I-like receptor signaling pathway, Small cell lung cancer, Toll-like receptor signaling pathway

**Product images:**

Western blot analysis of TRAF3 Antibody Cat.-No [AP20591PU-N] at 1/500 dilution. Lane 1: MCF-7 whole cell lysate. Lane 2: HEK293T whole cell lysate. Lane 3: NIH-3T3 whole cell lysate. Lane 4: Mouse lung tissue lysate. Lane 5: Rat colon tissue lysate.