

## Product datasheet for **AP20591PU-N**

### TRAF3 Rabbit Polyclonal Antibody

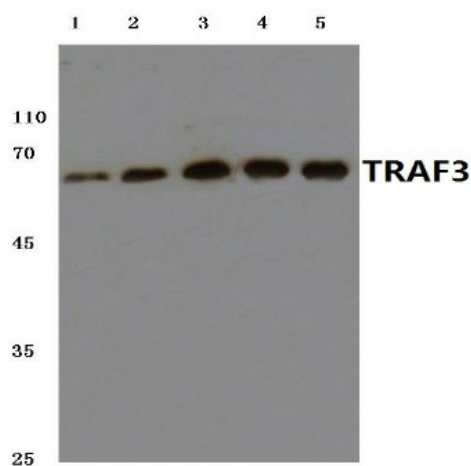
#### Product data:

Product Type:	Primary Antibodies
Applications:	WB
Recommended Dilution:	<b>Western blot:</b> 1/500 - 1/1000.
Reactivity:	Human, Mouse, Rat
Host:	Rabbit
Clonality:	Polyclonal
Specificity:	This antibody detects endogenous levels of TRAF3 protein. (region surrounding Ser289)
Formulation:	Phosphate buffered saline (PBS), pH 7.2. State: Aff - Purified State: Liquid purified Ig fraction (> 95% pure by SDS-PAGE). Preservative: 15 mM Sodium Azide
Concentration:	1.0 mg/ml
Purification:	Affinity Chromatography using epitope-specific immunogen
Conjugation:	Unconjugated
Storage:	Store undiluted at 2-8°C for one month or (in aliquots) at -20°C for longer. Avoid repeated freezing and thawing.
Stability:	Shelf life: one year from despatch.
Predicted Protein Size:	~ 68 kDa
Gene Name:	TNF receptor associated factor 3
Database Link:	<a href="#">Entrez Gene 22031 Mouse</a> <a href="#">Entrez Gene 362788 Rat</a> <a href="#">Entrez Gene 7187 Human Q13114</a>



[View online »](#)

<b>Background:</b>	Tumor necrosis factor (TNF)-activated cell signaling is mediated primarily through the TNF receptor 1 (TNF-R1) and, to a lesser extent, TNF-R2. Both TNF receptors are members of the expanding TNF receptor superfamily which includes the Fas antigen and CD40. Potential insight into an understanding of TNF receptor-mediated signaling was provided by the identification of two related proteins, TRAF1 and TRAF2 (for TNF receptor-associated factors 1 and 2, respectively). Both function to form heterodimeric complexes and associate with the cytoplasmic domain of TNF-R2. A third member of this protein family, alternatively designated CD40 bp, CRAF1, LAP1 or TRAF3, has been identified and shown to associate with the cytoplasmic domain of CD40. The similarity between a specific region of TRAF3 with regions of TRAF1 and TRAF2 define a "TRAF-C" domain that is necessary and sufficient for CD40 binding and homodimerization.
<b>Synonyms:</b>	TNF receptor-associated factor 3, CAP1, CAP-1, LMP1-associated protein, LAP1, CD40-binding protein, CD40BP
<b>Protein Families:</b>	Druggable Genome
<b>Protein Pathways:</b>	Pathways in cancer, RIG-I-like receptor signaling pathway, Small cell lung cancer, Toll-like receptor signaling pathway

**Product images:**

Western blot analysis of TRAF3 Antibody Cat.-No AP20591PU-N at 1/500 dilution. Lane 1: MCF-7 whole cell lysate. Lane 2: HEK293T whole cell lysate. Lane 3: NIH-3T3 whole cell lysate. Lane 4: Mouse lung tissue lysate. Lane 5: Rat colon tissue lysate.