

Product datasheet for **AP20587PU-M**

Nephrin (NPHS1) Rabbit Polyclonal Antibody

Product data:

Product Type:	Primary Antibodies
Applications:	IHC
Recommended Dilution:	Immunohistochemistry on Paraffin Sections: 1/50-1/200.
Reactivity:	Human, Mouse, Rat
Host:	Rabbit
Clonality:	Polyclonal
Specificity:	This antibody detects endogenous levels of Nephrin protein. (region surrounding His892)
Formulation:	PBS, pH~7.2 State: Aff - Purified State: Liquid purified Ig fraction (> 95% pure by SDS-PAGE) Preservative: 0.05% Sodium Azide
Concentration:	1.0 mg/ml
Purification:	Affinity Chromatography using epitope-specific immunogen
Conjugation:	Unconjugated
Storage:	Store undiluted at 2-8°C for one month or (in aliquots) at -20°C for longer. Avoid repeated freezing and thawing.
Stability:	Shelf life: one year from despatch.
Predicted Protein Size:	~ 135 kDa
Gene Name:	NPHS1 nephrin
Database Link:	<u>Entrez Gene 54631 Mouse</u> <u>Entrez Gene 64563 Rat</u> <u>Entrez Gene 4868 Human</u> <u>O60500</u>



[View online »](#)

Background:

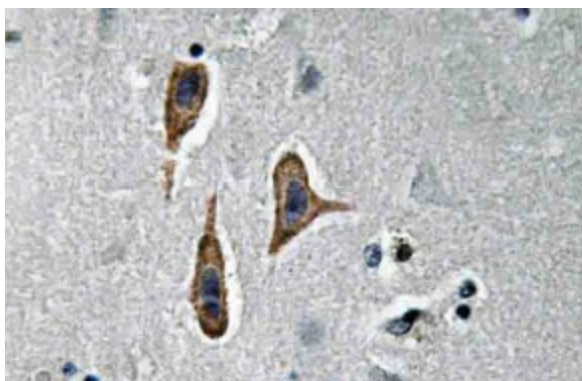
Nephrin is a member of the immunoglobulin family of cell adhesion molecules that localizes to opposing sites of the secondary foot processes formed by podocytes, a specialized epithelial cell that ensures size- and charge-selective ultrafiltration. The human nephrin gene maps to chromosome 19q13.1 and encodes a 1,241 amino acid protein that contains a transmembrane domain, 8 Ig-like modules, and 1 fibronectin III-like module. Nephrin is expressed in embryonic and adult kidneys and localizes to glomerular podocytes and the glomerular slit diaphragm. Nephrin stimulates mitogen-activated protein kinases and is enhanced by podocin, which binds to the cytoplasmic tail of nephrin. A293 cells treated with Phorbol-12-myristate- 13-acetate can upregulate nephrin, suggesting that protein kinase C is part of an intracellular signalling system, which regulates nephrin. Nephrin identified in mouse glomerular extract is a protein with an apparent molecular mass of 185 kDa.

Synonyms:

NPHS1, NPHN

Protein Families:

Druggable Genome, Transmembrane

Product images:


Immunohistochemistry (IHC) analyzes of Nephtrin antibody (Cat.-No.: [AP20587PU-N]) in paraffin-embedded human brain tissue.