

## Product datasheet for **AP20586PU-M**

### CNPase (CNP) Rabbit Polyclonal Antibody

#### Product data:

Product Type:	Primary Antibodies
Applications:	IHC, WB
Recommended Dilution:	<b>Western blot:</b> 1/500 - 1/1000. <b>Immunohistochemistry on paraffin sections:</b> 1/50 - 1/200.
Reactivity:	Human, Mouse, Rat
Host:	Rabbit
Clonality:	Polyclonal
Specificity:	This antibody detects endogenous levels of CNPase protein. (region surrounding Ala108)
Formulation:	Phosphate buffered saline (PBS), pH 7.2. State: Aff - Purified State: Liquid purified Ig fraction Preservative: 0.05% sodium azide
Concentration:	1.0 mg/ml
Purification:	Affinity chromatography (> 95% (by SDS-PAGE)
Conjugation:	Unconjugated
Storage:	Store undiluted at 2-8°C for one month or (in aliquots) at -20°C for longer. Avoid repeated freezing and thawing.
Stability:	Shelf life: one year from despatch.
Predicted Protein Size:	~ 48 kDa
Gene Name:	2',3'-cyclic nucleotide 3' phosphodiesterase
Database Link:	<u><a href="#">Entrez Gene 12799 Mouse</a></u> <u><a href="#">Entrez Gene 25275 Rat</a></u> <u><a href="#">Entrez Gene 1267 Human</a></u> <u><a href="#">P09543</a></u>



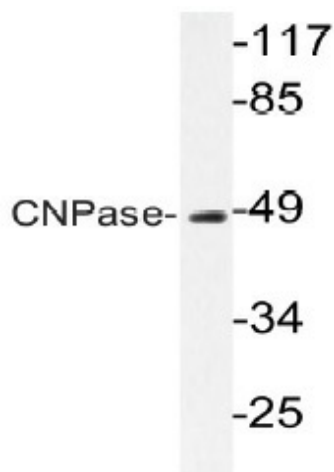
[View online »](#)

**Background:**

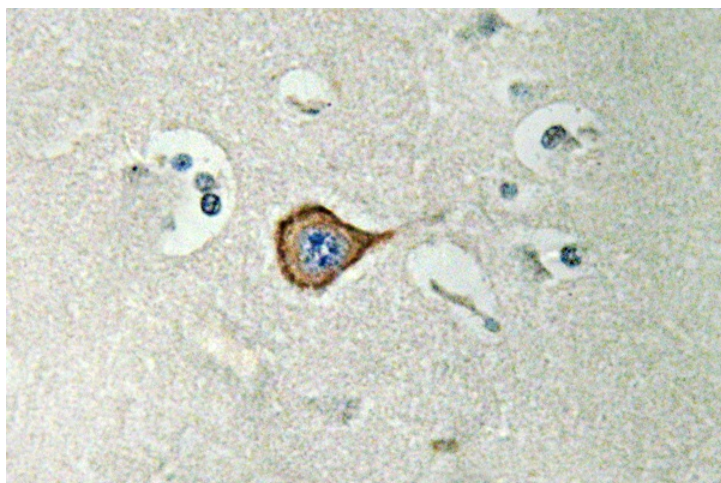
CNPase (2',3'-Cyclic Nucleotide 3'-Phosphodiesterase) exists in two forms: 46kDa (CNP1) and 48kDa (CNP2). It is expressed at high levels by oligodendrocytes in the central nervous system and by Schwann cells in the peripheral nervous system and is virtual absent in other cell types. CNPase activity is decreased in demyelinating diseases such as multiple sclerosis. CNPase gene is localized to chromosome 17q21, very near the BRCA 1 familial breast cancer gene.

**Synonyms:**

CNP, CNP1, Oligodendrocyte Marker

**Product images:**


Western blot (WB) analysis of CNPase antibody (Cat.-No.: [AP20586PU-N]) in extracts from HUVEC cells.



Immunohistochemistry (IHC) analyzes of CNPase antibody (Cat.-No.: [AP20586PU-N]) in paraffin-embedded human brain tissue.