

Product datasheet for **AP20584PU-M**

PAX8 Rabbit Polyclonal Antibody

Product data:

Product Type:	Primary Antibodies
Applications:	IHC, WB
Recommended Dilution:	Western blot: 1/500 - 1/1000. Immunohistochemistry on paraffin sections 1/50 - 1/200.
Reactivity:	Human, Mouse, Rat
Host:	Rabbit
Clonality:	Polyclonal
Specificity:	This antibody detects endogenous levels of Pax-8 protein. (region surrounding Asp194)
Formulation:	Phosphate buffered saline (PBS), pH 7.2. State: Aff - Purified State: Liquid purified Ig fraction Preservative: 0.05% sodium azide
Concentration:	1.0 mg/ml
Purification:	Affinity chromatography (> 95% (by SDS-PAGE)
Conjugation:	Unconjugated
Storage:	Store undiluted at 2-8°C for one month or (in aliquots) at -20°C for longer. Avoid repeated freezing and thawing.
Stability:	Shelf life: one year from despatch.
Predicted Protein Size:	~ 60 kDa
Gene Name:	paired box 8
Database Link:	<u>Entrez Gene 18510 Mouse</u> <u>Entrez Gene 81819 Rat</u> <u>Entrez Gene 7849 Human</u> <u>Q06710</u>



[View online »](#)

Background:

This protein is a member of the paired box (PAX) family of transcription factors, typically containing a paired box domain, an octapeptide, and a paired-type homeodomain. This family plays critical roles during fetal development and cancer growth. The specific function of the PAX8 is unknown but it may involve kidney cell differentiation, thyroid development, or thyroid dysgenesis. Alternative splicing in the gene by inclusion or exclusion of exons 7 and/or 8 has produced several known products but the biological significance of the variants is unknown. Several other splice variants have been proposed but the full nature of these products has not been described. Pax8 is also a marker of otic progenitor cells.

Synonyms:

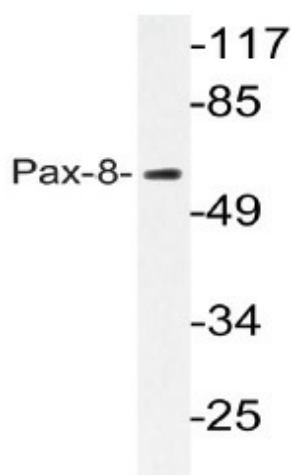
Pax-8

Protein Families:

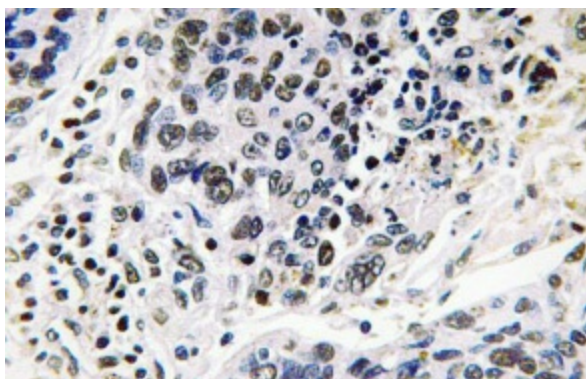
Druggable Genome, Transcription Factors

Protein Pathways:

Pathways in cancer, Thyroid cancer

Product images:


Western blot (WB) analysis of Pax-8 antibody (Cat.-No.: [AP20584PU-N]) in extracts from HT-29 cells.



Immunohistochemistry (IHC) analyzes of Pax-8 antibody (Cat.-No.: [AP20584PU-N]) in paraffin-embedded human lung carcinoma tissue.