

Product datasheet for **AP20583PU-N**

Cathepsin G (CTSG) Rabbit Polyclonal Antibody

Product data:

Product Type:	Primary Antibodies
Applications:	IHC, WB
Recommended Dilution:	Western blot: 1/500-1/1000. Immunohistochemistry on Paraffin Sections: 1/50-1/200.
Reactivity:	Human
Host:	Rabbit
Clonality:	Polyclonal
Immunogen:	Synthetic peptide, corresponding to amino acids 71-120 of Human Cathepsin G.
Specificity:	This antibody detects endogenous levels of Cathepsin G protein. (region surrounding Arg116)
Formulation:	PBS, pH 7.2 State: Aff - Purified State: Liquid purified Ig fraction (> 95% by SDS-PAGE) Preservative: 15 mM Sodium Azide
Concentration:	1.0 mg/ml
Purification:	Affinity Chromatography using epitope-specific immunogen
Conjugation:	Unconjugated
Storage:	Store undiluted at 2-8°C for one month or (in aliquots) at -20°C for longer. Avoid repeated freezing and thawing.
Stability:	Shelf life: one year from despatch.
Predicted Protein Size:	~ 30 kDa
Gene Name:	cathepsin G
Database Link:	Entrez Gene 1511 Human P08311
Background:	Cathepsin G is a serine protease, it consisting of a single polypeptide with a molecular weight of 30 kDa as determined by SDS-PAGE. Its substrates are collagen and proteoglycans. Poor regulation of Cathepsin G levels has been associated with various connective tissue disorders, for example pulmonary emphysema and cystic fibrosis.



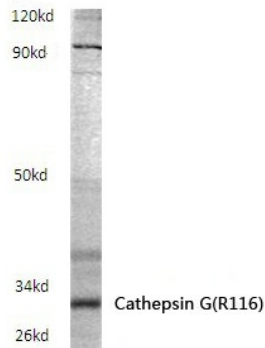
[View online »](#)

Synonyms: CTSG, VSP

Protein Families: Druggable Genome, Protease

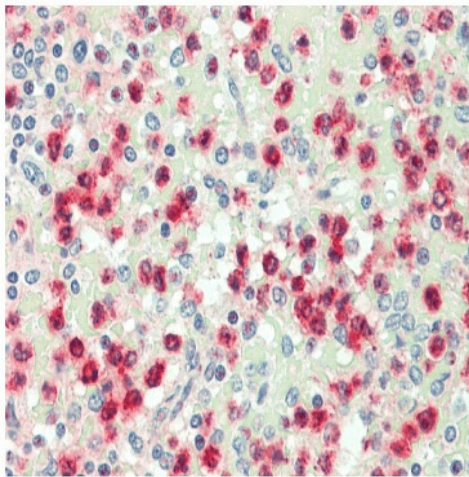
Protein Pathways: Lysosome, Neuroactive ligand-receptor interaction, Renin-angiotensin system, Systemic lupus erythematosus

Product images:



HeLa whole cell lysate
Cathepsin G(R116) pAb at 1:500 dilution

Western blot analysis of Cathepsin G antibody in extracts from HeLa cells.



Immunohistochemistry analysis of Cathepsin G antibody in paraffin-embedded human spleen tissue at 1/100.