

## Product datasheet for **AP20578PU-N**

### Human IgG1 Rabbit Polyclonal Antibody

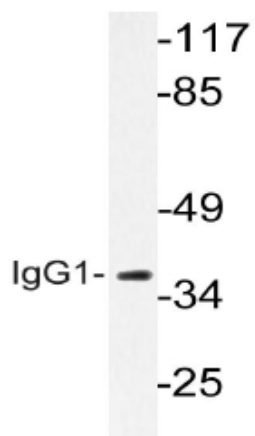
#### Product data:

Product Type:	Secondary Antibodies
Product Name:	Human IgG1 Rabbit Polyclonal Antibody
Applications:	IHC, WB
Recommended Dilution:	<b>Western blot:</b> 1/500-1/1000. <b>Immunohistochemistry on Paraffin Sections:</b> 1/50-1/200.
Reactivity:	Human, Mouse, Rat
Host:	Rabbit
Immunogen:	Synthetic peptide, corresponding to amino acids 211-260 of Human IGHG1.
Formulation:	Phosphate buffered saline (PBS), pH~7.2 State: Aff - Purified State: Liquid purified Ig fraction (> 95% pure by SDS-PAGE). Preservative: 0.05% Sodium Azide
Concentration:	1.0 mg/ml
Purification:	Affinity Chromatography using epitope-specific immunogen.
Conjugation:	Unconjugated
Storage:	Store undiluted at 2-8°C for one month or (in aliquots) at -20°C for longer. Avoid repeated freezing and thawing.

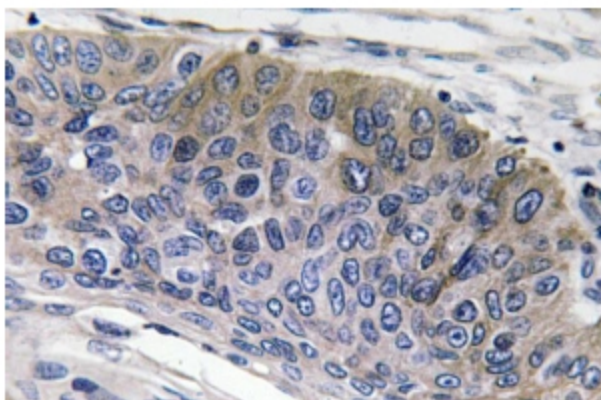


[View online »](#)

## Product images:



**Western blot** (WB) analysis of IgG1 Antibody (Cat.-No.: AP20578PU-N) in extracts from LOVO cells.



**Immunohistochemistry** analysis of IgG1 Antibody (Cat.-No.: AP20578PU-N) in Paraffin-Embedded Human lung carcinoma tissue.