

Product datasheet for **AP20573PU-M**

Cathepsin E (CTSE) Rabbit Polyclonal Antibody

Product data:

Product Type:	Primary Antibodies
Applications:	IHC, WB
Recommended Dilution:	Western blot: 1/500-1/1000. Immunohistochemistry on Paraffin Sections: 1/50-1/200.
Reactivity:	Human, Mouse, Rat
Host:	Rabbit
Clonality:	Polyclonal
Immunogen:	Synthetic peptide corresponding to amino acids 260-310 of Human Cathepsin E.
Specificity:	This antibody detects endogenous levels of Cathepsin E protein. (region surrounding Ile292)
Formulation:	Phosphate buffered saline (PBS), pH~7.2 State: Aff - Purified State: Liquid purified Ig fraction (> 95% by SDS-PAGE) Preservative: 0.05% Sodium Azide
Concentration:	1.0 mg/ml
Purification:	Affinity Chromatography using epitope-specific immunogen
Conjugation:	Unconjugated
Storage:	Store undiluted at 2-8°C for one month or (in aliquots) at -20°C for longer. Avoid repeated freezing and thawing.
Stability:	Shelf life: one year from despatch.
Predicted Protein Size:	~ 48 kDa
Gene Name:	cathepsin E
Database Link:	Entrez Gene 13034 Mouse Entrez Gene 25424 Rat Entrez Gene 1510 Human P14091



[View online »](#)

Background:

Cathepsin E is an intracellular aspartic protease of the pepsin family, which is structurally highly homologous to the lysosomal aspartic protease cathepsin D. Cathepsin E is less abundant than Cathepsin D and has a more limited distribution, which includes lymphoid tissues, gastrointestinal tract tissue, blood cells, microglia and activated B lymphocytes. It is not expressed in resting B lymphocytes. Cathepsin E may have a role in immune function. It is most likely involved in the processing of antigenic peptides during MHC class II-mediated antigen presentation. It may also play a role in activation-induced lymphocyte depletion in the thymus, and in neuronal degeneration and glial cell activation in the brain.

Synonyms:

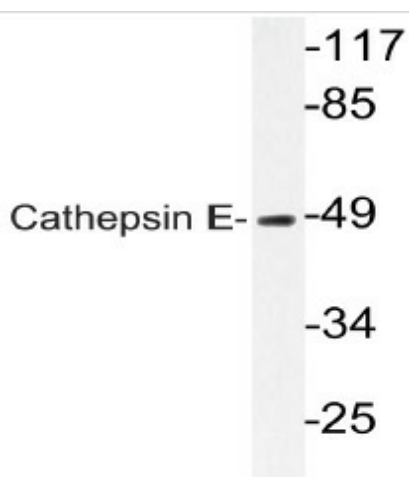
CTSE

Protein Families:

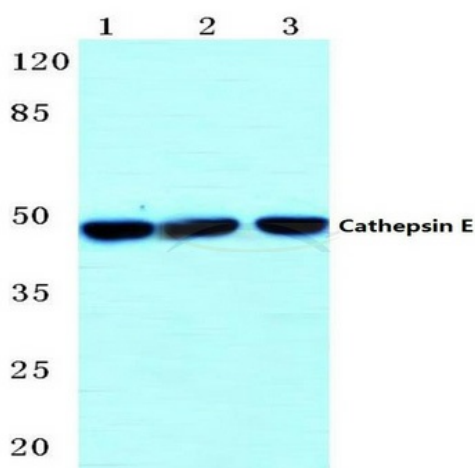
Druggable Genome, Protease

Protein Pathways:

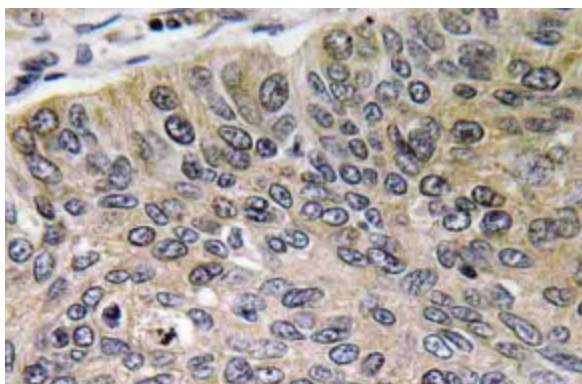
Lysosome

Product images:


Western blot (WB) analysis of Cathepsin E antibody in extracts from HUVEC cells.



Western blot (WB) analysis of Cathepsin E antibody at 1/500 dilution. Lane 1: MCF-7 cell lysate. Lane 2: Mouse lung tissue lysate. Lane 3: Rat lung tissue lysate.



Immunohistochemistry (IHC) analyzes of Cathepsin E antibody in paraffin-embedded human lung carcinoma tissue.