

## Product datasheet for **AP20570PU-N**

### IL4R Rabbit Polyclonal Antibody

#### Product data:

Product Type:	Primary Antibodies
Applications:	IHC, WB
Recommended Dilution:	<b>Western Blot:</b> 1/500-1/1000. <b>Immunohistochemistry on Paraffin Sections:</b> 1/50-1/200.
Reactivity:	Human, Mouse, Rat
Host:	Rabbit
Clonality:	Polyclonal
Immunogen:	Synthetic peptide corresponding to amino acids 220-265 of Human IL-4R $\alpha$ .
Specificity:	This antibody detects endogenous levels of IL-4R alpha protein. (region surrounding Ser254)
Formulation:	Phosphate buffered saline (PBS), pH~7.2 State: Aff - Purified State: Liquid purified Ig fraction (> 95% by SDS-PAGE) Preservative: 0.05% Sodium Azide
Concentration:	1.0 mg/ml
Purification:	Affinity Chromatography using epitope-specific immunogen
Conjugation:	Unconjugated
Storage:	Store undiluted at 2-8°C for one month or (in aliquots) at -20°C for longer. Avoid repeated freezing and thawing.
Stability:	Shelf life: one year from despatch.
Predicted Protein Size:	~ 88 kDa
Gene Name:	interleukin 4 receptor
Database Link:	<a href="#">Entrez Gene 3566 Human P24394</a>



[View online »](#)

**Background:**

The IL-2 receptor is a multicomponent complex consisting of three subunits, alpha, beta and gamma, each of which is required for high affinity binding of IL-2. The alpha chain functions primarily in binding IL-2, whereas the beta and gamma chains contribute to IL-2 binding and are essential to IL-2-induced activation of signaling pathways leading to T cell growth. Both IL-4R and IL-7R were initially described as single chain, high-affinity ligand-binding cytokine receptors. However, it is now well established that the IL-2Rgamma chain functions as a second subunit of the high affinity IL-4R and IL-7R receptors. Consequently, the originally described subunits of these latter receptors are now referred to as IL-4Ralpha and IL-7Ralpha, respectively, while the common subunit is referred to as gammac. Although the common gamma chain enhances ligand binding in these three cytokine receptors, it has no capacity to bind these ligands on its own. There is evidence that the gammac chain is also a subunit of IL-13R.

**Synonyms:**

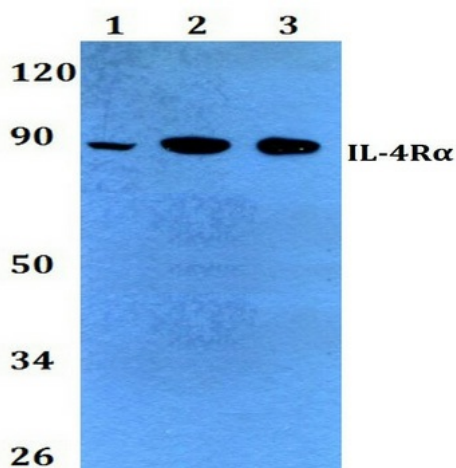
Interleukin-4 receptor alpha chain, IL-4R-alpha, IL4RA, 582J2.1, IL4 Receptor alpha

**Protein Families:**

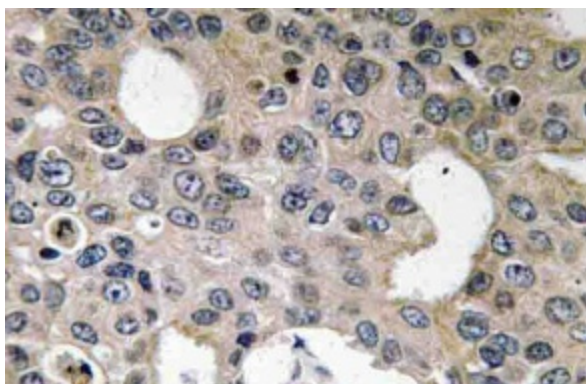
Druggable Genome, Secreted Protein

**Protein Pathways:**

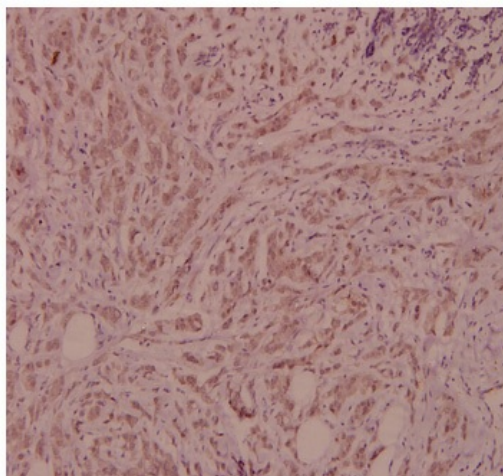
Cytokine-cytokine receptor interaction, Hematopoietic cell lineage, Jak-STAT signaling pathway

**Product images:**


Western Blot (WB) analysis of CD124 / IL4R Antibody at 1/500 dilution. Lane 1: HEK293T whole cell lysate. Lane 2: Raw264.7 whole cell lysate. Lane 3: H9C2 whole cell lysate.



Immunohistochemistry (IHC) analyzes of CD124 / IL4R Antibody in paraffin-embedded human breast carcinoma tissue.



Immunohistochemistry (IHC) analyzes of CD124 / IL4R Antibody in paraffin-embedded human breast carcinoma tissue at 1/100.