

Product datasheet for **AP20569PU-M**

Carbonic Anhydrase II (CA2) Rabbit Polyclonal Antibody

Product data:

Product Type:	Primary Antibodies
Applications:	IHC, WB
Recommended Dilution:	Western blot: 1/500-1/1000. Immunohistochemistry on Paraffin Sections: 1/50-1/200.
Reactivity:	Human, Rat
Host:	Rabbit
Clonality:	Polyclonal
Immunogen:	Synthetic peptide, corresponding to amino acids 201-250 of Human CA II.
Specificity:	This antibody detects endogenous levels of CA II protein. (region surrounding asn229)
Formulation:	Phosphate Buffered Saline (PBS), pH~7.2 State: Aff - Purified State: Liquid purified Ig fraction is (> 95% pure by SDS-PAGE) Preservative: 0.05% Sodium Azide
Concentration:	1.0 mg/ml
Purification:	Affinity Chromatography using epitope-specific immunogen
Conjugation:	Unconjugated
Storage:	Store undiluted at 2-8°C for one month or (in aliquots) at -20°C for longer. Avoid repeated freezing and thawing.
Stability:	Shelf life: one year from despatch.
Predicted Protein Size:	~ 28 kDa
Gene Name:	carbonic anhydrase 2
Database Link:	Entrez Gene 760 Human P00918



[View online »](#)

Background:

Carbonic anhydrases (CAs) are members of a large family of zinc metalloenzymes that catalyze the reversible hydration of carbon dioxide. CAs are involved in a variety of biological processes including respiration, calcification, acid-base balance and bone resorption, as well as the formation of aqueous humor, cerebrospinal fluid, saliva and gastric juice. They show extensive diversity in distribution and in their subcellular localization. The human CA2 gene, which maps to chromosome 8q21, encodes CA II, a cytoplasmic protein that has the highest turnover rate and widest tissue distribution of any known human CA isozyme.

Synonyms:

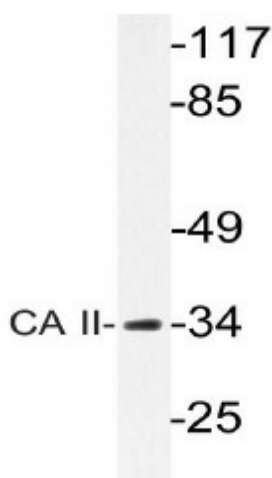
Carbonic anhydrase II, Carbonate dehydratase II, Carbonic anhydrase C, CA2, CA-II, CAC

Protein Families:

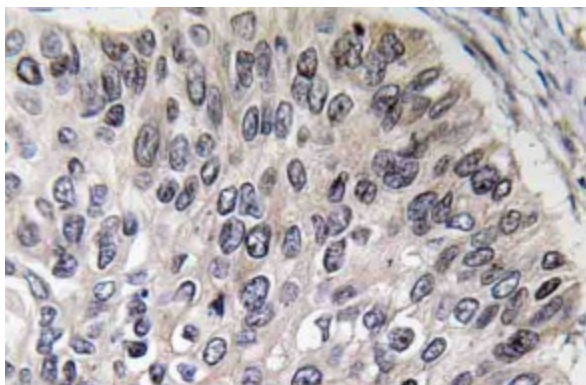
Druggable Genome

Protein Pathways:

Nitrogen metabolism

Product images:


Western blot analysis of Carbonic anhydrase 2 antibody (Cat.-No [AP20569PU-N]) in extracts from rat heart cells.



Immunohistochemistry analyzes of Carbonic anhydrase 2 antibody (Cat.-No [AP20569PU-N]) in paraffin-embedded human lung carcinoma tissue.