

Product datasheet for **AP20568PU-M**

Annexin A1 (ANXA1) Rabbit Polyclonal Antibody

Product data:

Product Type:	Primary Antibodies
Applications:	WB
Recommended Dilution:	Western blot: 1/500-1/1000. Immunohistochemistry on paraffin sections: 1/50-1/200.
Reactivity:	Human, Mouse, Rat
Host:	Rabbit
Clonality:	Polyclonal
Specificity:	This antibody detects endogenous levels of Annexin I protein. (region surrounding asn146)
Formulation:	Phosphate buffered saline (PBS), pH 7.2. State: Aff - Purified State: Liquid purified Ig fraction
Concentration:	1.0 mg/ml
Purification:	Affinity chromatography (> 95% (by SDS-PAGE)
Conjugation:	Unconjugated
Storage:	Store undiluted at 2-8°C for one month or (in aliquots) at -20°C for longer. Avoid repeated freezing and thawing.
Stability:	Shelf life: one year from despatch.
Predicted Protein Size:	~ 39 kDa
Gene Name:	annexin A1
Database Link:	Entrez Gene 16952 Mouse Entrez Gene 25380 Rat Entrez Gene 301 Human P04083
Background:	During apoptosis, phosphatidylserine (PS) is translocated from the cytoplasmic face of the plasma membrane to the cell surface. Annexin V has a strong, Ca ²⁺ -dependent affinity for PS and therefore is used as a probe for detecting apoptosis. Annexin V has also been identified as an anticoagulant protein in the blood coagulation cascade, by acting as an inhibitor of prothrombin activation. The presence of antibodies to Annexin V is associated with systemic lupus erythematosus (SLE), recurrent spontaneous abortions and systemic sclerosis (SSc).

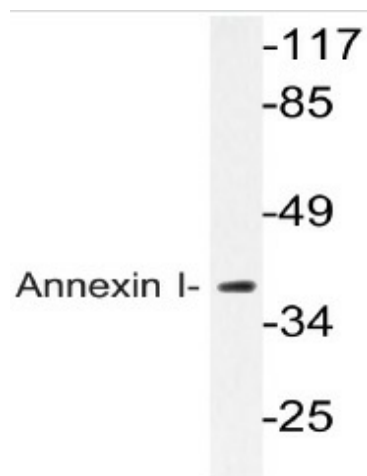


[View online »](#)

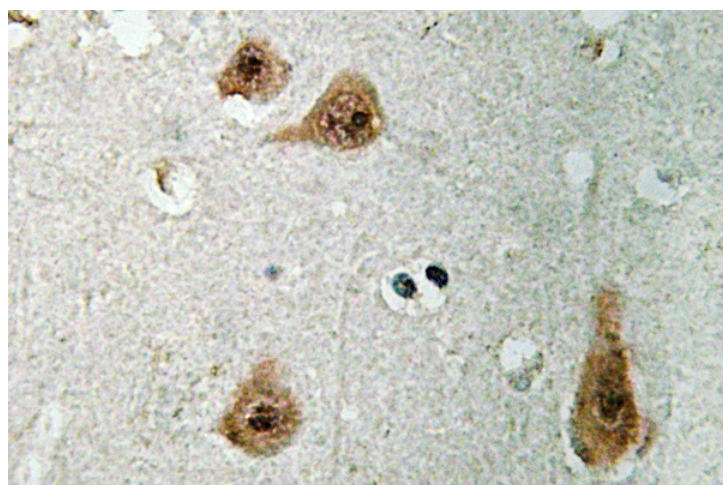
Synonyms: ANX1, LPC1, Annexin-1, Annexin I, Lipocortin I, Calpactin II, Chromobindin-9, p35

Protein Families: Druggable Genome

Product images:



Immunohistochemistry (IHC) analyzes of Annexin I antibody (Cat.-No.: [AP20568PU-N]) in paraffin-embedded human brain tissue.



Western blot (WB) analysis of Annexin I antibody (Cat.-No.: [AP20568PU-N]) in extracts from HeLa cells.