

## Product datasheet for **AP20565PU-M**

### **HSP27 (HSPB1) Rabbit Polyclonal Antibody**

#### **Product data:**

Product Type:	Primary Antibodies
Applications:	IHC, WB
Recommended Dilution:	<b>Western Blot:</b> 1/500 - 1/1000. <b>Immunohistochemistry on paraffin sections</b> 1/50 - 1/200.
Reactivity:	Human, Mouse, Rat
Host:	Rabbit
Clonality:	Polyclonal
Specificity:	This antibody detects endogenous levels of HSP27 protein. (region surrounding Arg75)
Formulation:	Phosphate buffered saline (PBS), pH 7.2. State: Aff - Purified State: Liquid purified Ig fraction Preservative: 15 mM sodium azide
Concentration:	1.0 mg/ml
Purification:	Affinity chromatography (> 95% (by SDS-PAGE)
Conjugation:	Unconjugated
Storage:	Store undiluted at 2-8°C for one month or (in aliquots) at -20°C for longer. Avoid repeated freezing and thawing.
Stability:	Shelf life: one year from despatch.
Predicted Protein Size:	~ 27 kDa
Gene Name:	heat shock protein family B (small) member 1
Database Link:	<u><a href="#">Entrez Gene 15507 Mouse</a></u> <u><a href="#">Entrez Gene 24471 Rat</a></u> <u><a href="#">Entrez Gene 3315 Human</a></u> <u><a href="#">P04792</a></u>



[View online »](#)

## Background:

Hsp27, also referred to as the Estrogen-Regulated 24K protein and HSP28, is one of several small heat shock proteins (HSP) produced by all organisms studied. Hsp27 synthesis is induced by elevated temperature, as well as estrogen in hormone responsive cells. This protein is involved in stress resistance and actin organization. Interestingly, human HSP27 also shares greater than 50% homology with low molecular weight *Drosophila* HSP's and mammalian  $\alpha$ -crystalline lens protein. Because of the estrogen-responsive nature of Hsp27, this protein has been studied extensively in human estrogen-responsive tissues such as cervix, endometrium and breast tissue. This work has led to the suggestion that Hsp27 may be a useful marker in classifying various hormone sensitive tumors.

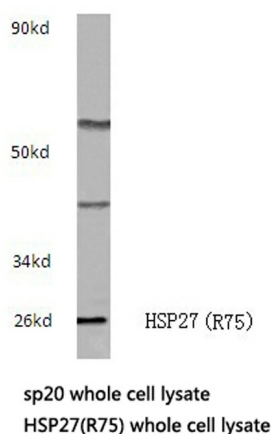
## Synonyms:

Heat shock protein beta-1, Heat shock 27 kDa protein, HSP28, 28 kDa heat shock protein, SRP27, HSP25

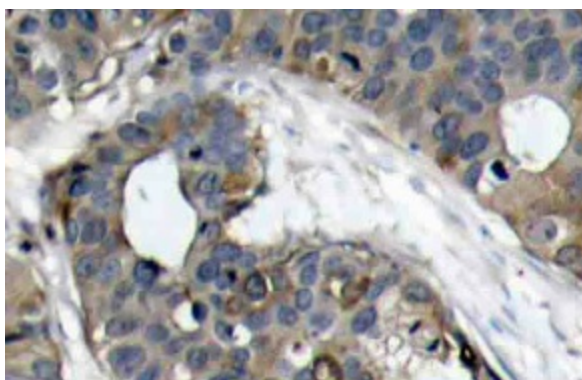
## Protein Pathways:

MAPK signaling pathway, VEGF signaling pathway

## Product images:



Western blot (WB) analysis of HSP27 antibody (Cat.-No.: [AP20565PU-N]) in extracts from sp20 cells.



Immunohistochemistry (IHC) analyzes of HSP27 antibody (Cat.-No.: [AP20565PU-N]) in paraffin-embedded human breast carcinoma tissue.