

Product datasheet for **AP20564PU-N**

CAMK2A (+CAMK2D) Rabbit Polyclonal Antibody

Product data:

Product Type:	Primary Antibodies
Applications:	IF, IHC, WB
Recommended Dilution:	Western blot: 1/500 - 1/1000. Immunohistochemistry on paraffin sections 1/50 - 1/200. Immunofluorescence: 1/50 - 1/200.
Reactivity:	Human, Mouse, Rat
Host:	Rabbit
Clonality:	Polyclonal
Specificity:	This antibody detects endogenous levels of CaMKIIalpha/delta protein. (region surrounding Met281)
Formulation:	Phosphate buffered saline (PBS), pH 7.2. State: Aff - Purified State: Liquid purified Ig fraction Preservative: 15 mM sodium azide
Concentration:	1.0 mg/ml
Purification:	Affinity chromatography (> 95% (by SDS-PAGE)
Conjugation:	Unconjugated
Storage:	Store undiluted at 2-8°C for one month or (in aliquots) at -20°C for longer. Avoid repeated freezing and thawing.
Stability:	Shelf life: one year from despatch.
Predicted Protein Size:	~ 54 kDa
Gene Name:	calcium/calmodulin dependent protein kinase II alpha
Database Link:	Entrez Gene 815 Human Q9UQM7



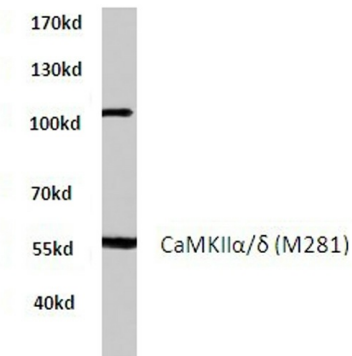
[View online »](#)

Background:

CaMKII (Calcium/calmodulin-dependent protein kinase II) is a ubiquitous serine/threonine protein kinase that is abundant in the brain as a major constituent of the postsynaptic density (PSD). The enzyme is an oligomeric protein composed of distinct but related subunits, α , β , γ , and δ , each encoded by a separate gene. CAMK2A assembles into heterooligomeric complexes with other CAMK2 subunits. CaMKII is a prominent kinase in the central nervous system that may function in long term potentiation and neurotransmitter release.

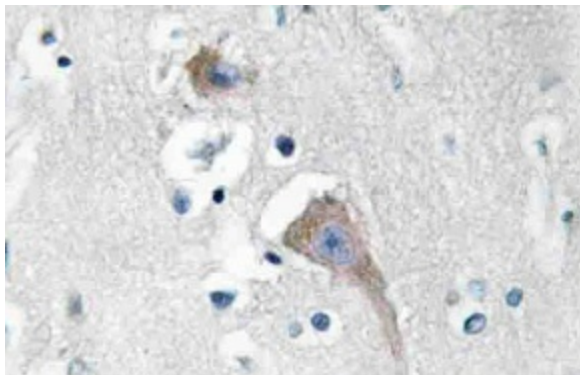
Synonyms:

CAMKA, KIAA0968, CaM-kinase II alpha chain, CaM kinase II subunit alpha, CaMK-II subunit alpha

Product images:


HEK293A whole cell lysate
CaMKII α / δ (M281) pAb at 1:500 dilution

Western blot (WB) analysis of CaMKII α / δ antibody (Cat.-No.: AP205564PU-N) in extracts from HEK293A cells.



Immunohistochemistry (IHC) analyzes of CaMKII α / δ antibody (Cat.-No.: AP20564PU-N) in paraffin-embedded human breast carcinoma tissue.