

Product datasheet for **AP20563PU-M**

DOK2 Rabbit Polyclonal Antibody

Product data:

Product Type:	Primary Antibodies
Applications:	IF, IHC, WB
Recommended Dilution:	Western blot: 1/500-1/1000. Immunofluorescence: 1/50-1/200. Immunohistochemistry on Paraffin Sections: 1/50-1/200.
Reactivity:	Human, Mouse
Host:	Rabbit
Clonality:	Polyclonal
Immunogen:	Synthetic peptide, corresponding to amino acids 271-320 of Human Dok-2.
Specificity:	This antibody detects endogenous levels of Dok-2 protein. (region surrounding Arg293)
Formulation:	Phosphate buffered saline (PBS), pH~7.2 State: Aff - Purified State: Liquid purified Ig fraction (> 95% pure by SDS-PAGE). Preservative: 0.05% Sodium Azide
Concentration:	1.0 mg/ml
Purification:	Affinity Chromatography using epitope-specific immunogen.
Conjugation:	Unconjugated
Storage:	Store undiluted at 2-8°C for one month or (in aliquots) at -20°C for longer. Avoid repeated freezing and thawing.
Stability:	Shelf life: one year from despatch.
Predicted Protein Size:	~56 kDa
Gene Name:	docking protein 2
Database Link:	Entrez Gene 13449 Mouse Entrez Gene 9046 Human O60496



[View online »](#)

Background:

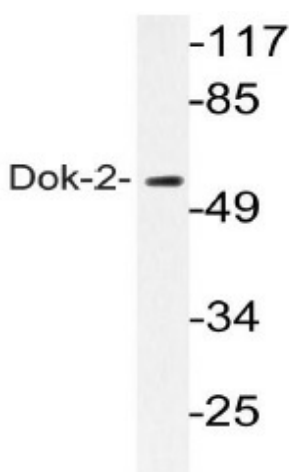
Dok-1 associates with the Ras GTPase activating protein (Ras GAP) upon tyrosine phosphorylation. Evidence suggests that p62 Dok-1 is a substrate of the constitutive tyrosine kinase activity of p210 Bcr-Abl, a fusion protein caused by the t(9;22) translocation and associated with chronic myelogenous leukemia. Dok-1, as well as the tyrosine kinase substrates IRS-1 and Cas, is a member of a class of “docking” proteins which contain multiple tyrosine residues and putative SH2 binding sites. Dok-1 is suspected to be the substrate phosphorylated in response to stimulation by a number of growth factors, including PDGF, VEGF, insulin and IGF. Dok-2 (also designated p56 Dok) has also been identified as a potential mediator of the effects of p210 Bcr-Abl.

Synonyms:

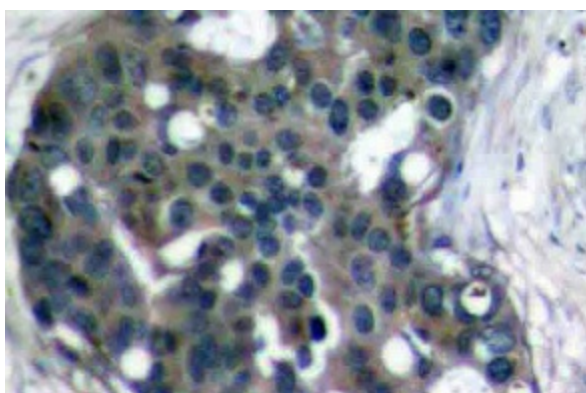
p56(dok-2), p56Dok-2, Docking protein 2

Protein Families:

Druggable Genome

Product images:


Western blot (WB) analyzes of Dok-2 antibody in extracts from COLO205 cells.



Immunohistochemistry (IHC) analyzes of Dok-2 antibody in paraffin-embedded human breast carcinoma tissue.