

## Product datasheet for **AP20560PU-N**

### Granzyme H (GZMH) Rabbit Polyclonal Antibody

#### Product data:

Product Type:	Primary Antibodies
Applications:	IF, IHC, WB
Recommended Dilution:	<b>Western blot:</b> 1/500 - 1/1000. <b>Immunohistochemistry on paraffin sections</b> 1/50 - 1/200. <b>Immunofluorescence:</b> 1/50 - 1/200.
Reactivity:	Human, Mouse, Rat
Host:	Rabbit
Clonality:	Polyclonal
Immunogen:	Synthetic peptide, corresponding to amino acids 50-100 of Human Granzyme H.
Specificity:	This antibody detects endogenous levels of Granzyme H protein. (region surrounding Gly75)
Formulation:	Phosphate buffered saline (PBS), pH 7.2. State: Aff - Purified State: Liquid purified Ig fraction Preservative: 0.05% sodium azide
Concentration:	1.0 mg/ml
Purification:	Affinity chromatography (> 95% (by SDS-PAGE)
Conjugation:	Unconjugated
Storage:	Store undiluted at 2-8°C for one month or (in aliquots) at -20°C for longer. Avoid repeated freezing and thawing.
Stability:	Shelf life: one year from despatch.
Predicted Protein Size:	~ 21, 27 kDa
Gene Name:	granzyme H
Database Link:	<a href="#">Entrez Gene 2999 Human P20718</a>



[View online »](#)

**Background:**

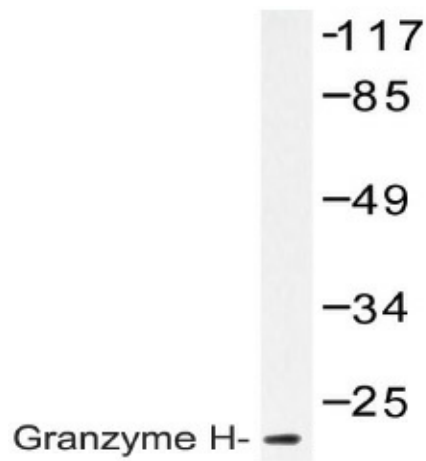
The granzyme family of proteins belong to the larger peptidase S1 family. Granzyme A and granzyme B are serine proteases that facilitate apoptotic signaling in cytotoxic T lymphocytes (CTL) and natural killer (NK) cells. Within the granules of activated CTLs, granzyme A and granzyme B are processed and converted to their active forms by the lysosomal cysteine protease cathepsin C. Once cleaved, these active proteases target distinct substrates for proteolysis and, thereby, mediate apoptosis through two different pathways. Granzyme H, also designated cytotoxic T-lymphocyte proteinase, cathepsin G-like 2 (CTSL2) or cytotoxic serine protease C (CSP-C), contains one peptidase S1 domain. Granzyme H localizes to cytoplasmic granules of cytolytic T-lymphocytes and is important for target cell lysis in cell-mediated immune responses

**Synonyms:**

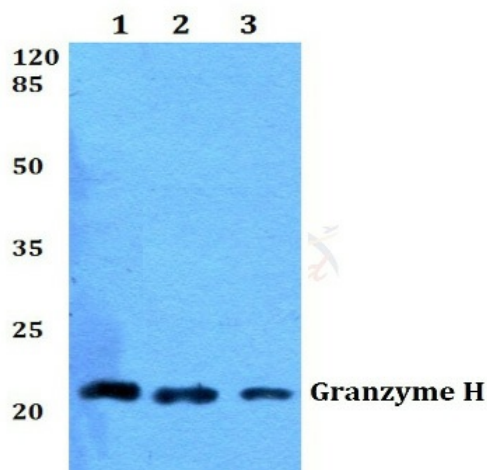
CGL2, CTSL2, CCP-X, Cytotoxic serine protease C, CSP-C

**Protein Families:**

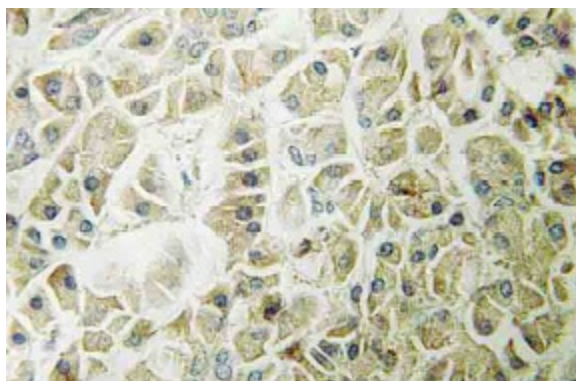
Druggable Genome, Protease

**Product images:**

Western blot (WB) analysis of Granzyme H antibody in extracts from K562 cells.



Western blot (WB) analysis of Granzyme H antibody at 1/500 dilution. Lane 1: MCF-7 whole cell lysate. Lane 2: Raw264.7 whole cell lysate. Lane 3: H9C2 whole cell lysate.



Immunohistochemistry (IHC) analyzes of Granzyme H antibody in paraffin-embedded human pancreas tissue.