

## Product datasheet for **AP20559PU-M**

### **Rad51L1 (RAD51B) Rabbit Polyclonal Antibody**

#### **Product data:**

Product Type:	Primary Antibodies
Applications:	IHC, WB
Recommended Dilution:	<b>Western blot:</b> 1/500 - 1/1000. <b>Immunohistochemistry on paraffin sections</b> 1/50 - 1/200.
Reactivity:	Human, Mouse
Host:	Rabbit
Clonality:	Polyclonal
Immunogen:	Synthetic peptide, corresponding to amino acids 201-250 of Human Rad51B.
Specificity:	This antibody detects endogenous levels of Rad51B protein (region surrounding Gly226).
Formulation:	Phosphate buffered saline (PBS), pH 7.2 State: Aff - Purified State: Liquid purified Ig fraction (> 95% pure by SDS-PAGE) Preservative: 0.05% Sodium Azide
Concentration:	1.0 mg/ml
Purification:	Affinity Chromatography
Conjugation:	Unconjugated
Storage:	Store undiluted at 2-8°C for one month or (in aliquots) at -20°C for longer. Avoid repeated freezing and thawing.
Stability:	Shelf life: one year from despatch.
Predicted Protein Size:	~ 45 kDa
Gene Name:	RAD51 paralog B
Database Link:	<u><a href="#">Entrez Gene 19363 Mouse</a></u> <u><a href="#">Entrez Gene 5890 Human</a></u> <u><a href="#">O15315</a></u>



[View online »](#)

**Background:**

The DNA repair proteins Rad50, Rad51A-D, Rad52 and Rad54 A and B are key components of the double-strand break repair pathway (DSBR). The process of homologous recombination is a major DNA repair pathway that operates on DNA double-strand breaks to promote error-free repair. Human Rad51 protein assembles on a DNA molecule through cooperative binding and forms a long filament for homologous recombination. In addition to Rad51 protein, five paralogs have been identified in vertebrates, Rad51B, Rad51C, Rad51D, Xrcc2 and Xrcc3. Rad51B is a widely expressed protein that is involved in the repair of double-stranded DNA breaks that can arise during DNA replication. It can form a dimer with Rad51C and this complex shows single-stranded DNAdependent ATPase activity.

**Synonyms:**

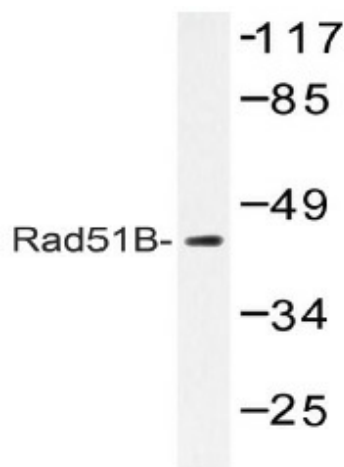
R51H2, RAD51B, RAD51 homolog B, RAD51-like protein 1, REC2

**Protein Families:**

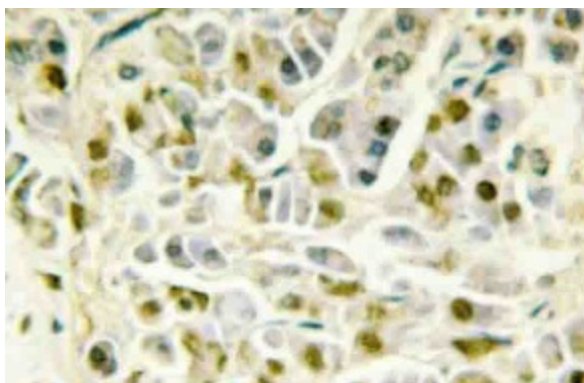
Druggable Genome

**Protein Pathways:**

Homologous recombination

**Product images:**


Western blot (WB) analysis of Rad51B antibody (Cat.-No.: [AP20559PU-N]) in extracts from COS-7 cells.



Immunohistochemistry (IHC) analyzes of Rad51B antibody (Cat.-No.: [AP20559PU-N]) in paraffin-embedded human pancreas tissue.