

Product datasheet for **AP20558PU-M**

Galectin 8 (LGALS8) Rabbit Polyclonal Antibody

Product data:

| | |
|-------------------------|---|
| Product Type: | Primary Antibodies |
| Applications: | IF, IHC, WB |
| Recommended Dilution: | Western blot: 1/500-1/1000. Immunohistochemistry on Paraffin Sections: 1/50-1/200. Immunofluorescence: 1/50-1/200. |
| Reactivity: | Human, Mouse |
| Host: | Rabbit |
| Clonality: | Polyclonal |
| Immunogen: | Synthetic peptide, corresponding to amino acids 61-110 of Human Galectin-8. |
| Specificity: | This antibody detects endogenous levels of Galectin-8 protein. (region surrounding asn82) |
| Formulation: | PBS, pH~7.2 State: Aff - Purified State: Liquid purified Ig fraction (> 95% pure by SDS-PAGE) Preservative: 0.05% Sodium Azide |
| Concentration: | 1.0 mg/ml |
| Purification: | Affinity Chromatography using the epitope-specific immunogen |
| Conjugation: | Unconjugated |
| Storage: | Store undiluted at 2-8°C for one month or (in aliquots) at -20°C for longer. Avoid repeated freezing and thawing. |
| Stability: | Shelf life: one year from despatch. |
| Predicted Protein Size: | ~ 36 kDa |
| Gene Name: | galectin 8 |
| Database Link: | Entrez Gene 56048 Mouse Entrez Gene 3964 Human O00214 |



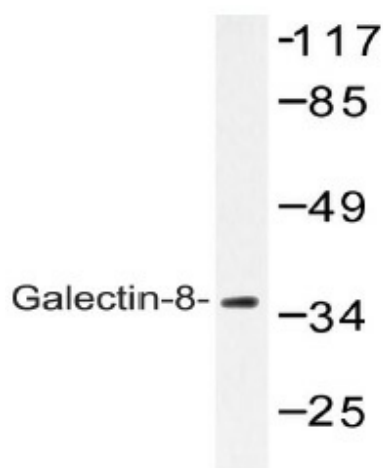
[View online »](#)

Background:

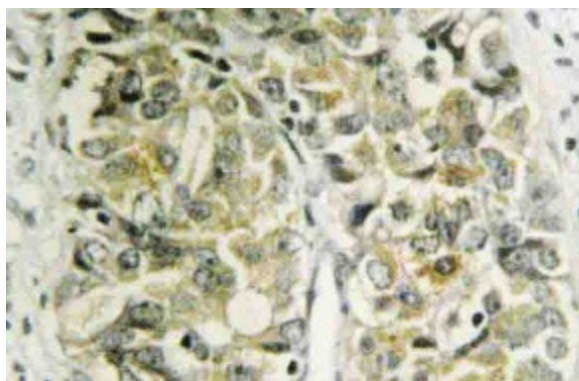
Several proteins have been identified as specific markers of prostate cancer, and they may be useful as diagnostic indicators. PSA, prostate specific antigen, is the classical indicator for transformed prostate tissue; however, in addition to being upregulated in prostate cancer, PSA is also upregulated in non-malignant conditions, such as benign prostatic hyperplasia prostate. Galectin-8, also known as prostate-specific membrane antigen (PCTA-1), is an additional prostate-specific antigen that is overexpressed only in malignant tumors and therefore is a more specific identifier of malignancies. It is a member of the galectin gene family which mediates both cell-cell and cellmatrix interactions in a manner similar to the selectin subgroup of C-type lectins.

Synonyms:

LGALS8, Galectin8, Gal-8, Prostate carcinoma tumor antigen 1, PCTA-1, Po66 carbohydrate-binding protein, Po66-CBP

Product images:


Western blot (WB) analysis of Galectin-8 antibody (Cat.-No.: [AP20558PU-N]) in extracts from 3T3 cells.



Immunohistochemistry (IHC) analyzes of Galectin-8 antibody (Cat.-No.: [AP20558PU-N]) in paraffin-embedded human prostate carcinoma tissue.