

Product datasheet for **AP20552PU-M**

MALT1 Rabbit Polyclonal Antibody

Product data:

Product Type:	Primary Antibodies
Applications:	IF, IHC, WB
Recommended Dilution:	Western blot: 1/500-1/1000. Immunohistochemistry on paraffin sections 1/50-1/200. Immunofluorescence: 1/50-1/200.
Reactivity:	Human, Mouse
Host:	Rabbit
Clonality:	Polyclonal
Specificity:	This antibody detects endogenous levels of MALT1 protein. (region surrounding asn324)
Formulation:	Phosphate Buffered Saline (PBS), pH~7.2 State: Aff - Purified State: Liquid purified Ig fraction is (> 95% pure by SDS-PAGE). Preservative: 0.05% Sodium Azide
Concentration:	1.0 mg/ml
Purification:	Affinity Chromatography using epitope-specific immunogen.
Conjugation:	Unconjugated
Storage:	Store undiluted at 2-8°C for one month or (in aliquots) at -20°C for longer. Avoid repeated freezing and thawing.
Stability:	Shelf life: one year from despatch.
Predicted Protein Size:	~68 kDa
Gene Name:	MALT1 paracaspase
Database Link:	<u>Entrez Gene 240354 Mouse</u> <u>Entrez Gene 10892 Human</u> <u>Q9UDY8</u>

[View online »](#)

Background:

Mucosa Associated Lymphoid Tissue lymphoma translocation gene 1 (MALT1) is found in extranodal low-grade B-cell lymphomas. MALT1 encodes two Iglike C2-type domains and fuses with an API2 gene, which is highly expressed in adult lymphoid tissue. The translocation of this MALT1 gene, which maps to human chromosome 18q21, and the apoptosis-inhibiting API2 gene results in an increased development of MALT lymphomas and apoptosis inhibition. Sites at which this API2-MALT1 (11;18)(q21;q21) translocation commonly occurs are within human lung and kidney tissue. MALT lymphoma expresses nuclear Bcl10, which mediates the oligomerization and activation of a MALT1 caspase-like domain. The MALT1-API2 fusion protein activates NF-kappaB and creates a signaling pathway, which is influenced by this Bcl10-MALT1 complex. MALT1 mRNA is found in pre-B cells, mature B cells, and plasma cells.

Synonyms:

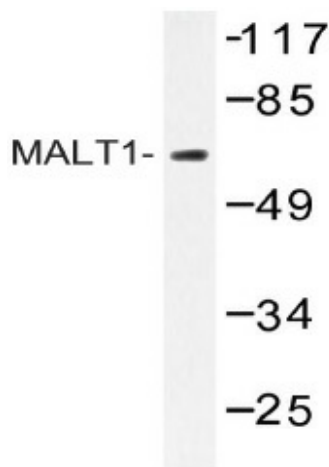
Mucosa-associated lymphoid tissue lymphoma translocation protein 1, MLT, Paracaspase

Protein Families:

Druggable Genome, Protease

Protein Pathways:

B cell receptor signaling pathway, T cell receptor signaling pathway

Product images:


Western blot (WB) analysis of MALT1 antibody (Cat.-No.: [AP20552PU-N]) in extracts from HUVEC cells.