

Product datasheet for **AP20550PU-M**

BCL2L2 Rabbit Polyclonal Antibody

Product data:

Product Type:	Primary Antibodies
Applications:	IF, IHC, WB
Recommended Dilution:	Western blot: 1/500 - 1/1000. Immunohistochemistry on paraffin sections 1/50 - 1/200. Immunofluorescence: 1/50 - 1/200.
Reactivity:	Human, Mouse, Rat
Host:	Rabbit
Clonality:	Polyclonal
Specificity:	This antibody detects endogenous levels of Bcl-w protein. (region surrounding Gly154)
Formulation:	Phosphate buffered saline (PBS), pH 7.2. State: Aff - Purified State: Liquid purified Ig fraction Preservative: 0.05% sodium azide
Concentration:	1.0 mg/ml
Purification:	Affinity chromatography (> 95% (by SDS-PAGE)
Conjugation:	Unconjugated
Storage:	Store undiluted at 2-8°C for one month or (in aliquots) at -20°C for longer. Avoid repeated freezing and thawing.
Stability:	Shelf life: one year from despatch.
Predicted Protein Size:	~ 21 kDa
Gene Name:	BCL2 like 2
Database Link:	<u>Entrez Gene 12050 Mouse</u> <u>Entrez Gene 60434 Rat</u> <u>Entrez Gene 599 Human</u> <u>Q92843</u>



[View online »](#)

Background:

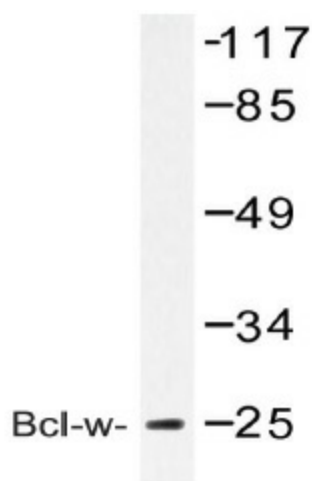
The Bcl-2 family of proteins is characterized by its ability to modulate cell death (apoptosis) under a broad range of physiological conditions. Bcl-2, A1 and Bcl-xL function to inhibit apoptosis while other members of the Bcl-2 family, Bax, Bad, Bak and Bcl-xS oppose their death-suppressing effects. Using a PCR-based strategy, an additional protein with life-promoting activity, designated Bcl-w, has been identified. The protein is highly conserved between mouse and human and is encoded by a gene located near the TCRalpha gene on chromosome 14. Bcl-w is expressed in myeloid cell lines but not in T and B lymphocytes, and can be found in a wide range of tissues. An alternative splicing event in exon 4 results in two transcripts. The first, Bcl-w, encodes a protein of 193 amino acids, and the second, Bcl-w/rox, encodes a protein 333 amino acids in length. The “rox” portion of Bcl-w/rox shows a striking 66% amino acid sequence identity with the Drosophila rox2 protein; however, the Bcl-w/rox transcript may be expressed at very low levels.

Synonyms:

Bcl2-L-2, BCL2L2, BCLW, Bcl-w, KIAA0271

Protein Families:

Druggable Genome, Transmembrane

Product images:


Western blot (WB) analysis of Bcl-w antibody (Cat.-No.: [AP20550PU-N]) in extracts from COLO cell