

## Product datasheet for **AP20545PU-N**

### Adducin 2 (ADD2) Rabbit Polyclonal Antibody

#### Product data:

Product Type:	Primary Antibodies
Applications:	IF, WB
Recommended Dilution:	<b>Western Blot:</b> 1/500-1/1000. <b>Immunofluorescence:</b> 1/50-1/200.
Reactivity:	Human, Mouse, Rat
Host:	Rabbit
Clonality:	Polyclonal
Immunogen:	Synthetic peptide, corresponding to amino acids 470-520 of Human Adducin $\beta$ .
Specificity:	This antibody detects endogenous levels of Adducin beta protein. (region surrounding Glu497)
Formulation:	PBS, pH~7.2 State: Aff - Purified State: Liquid purified Ig fraction (> 95% pure by SDS-PAGE) Preservative: 0.05% Sodium Azide
Concentration:	1.0 mg/ml
Purification:	Affinity Chromatography using epitope-specific immunogen
Conjugation:	Unconjugated
Storage:	Store undiluted at 2-8°C for one month or (in aliquots) at -20°C for longer. Avoid repeated freezing and thawing.
Stability:	Shelf life: one year from despatch.
Predicted Protein Size:	~81 kDa
Gene Name:	Homo sapiens adducin 2 (ADD2), transcript variant 1
Database Link:	<u><a href="#">Entrez Gene 11519 Mouse</a></u> <u><a href="#">Entrez Gene 24171 Rat</a></u> <u><a href="#">Entrez Gene 119 Human P35612</a></u>



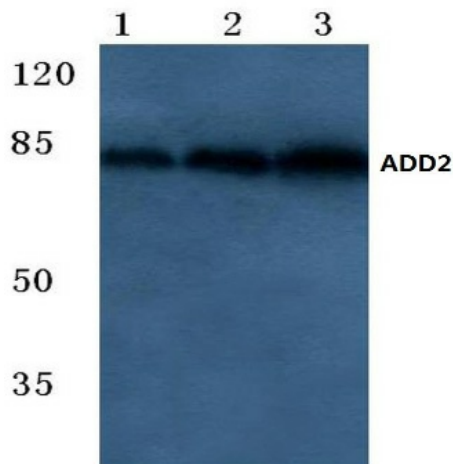
[View online »](#)

**Background:**

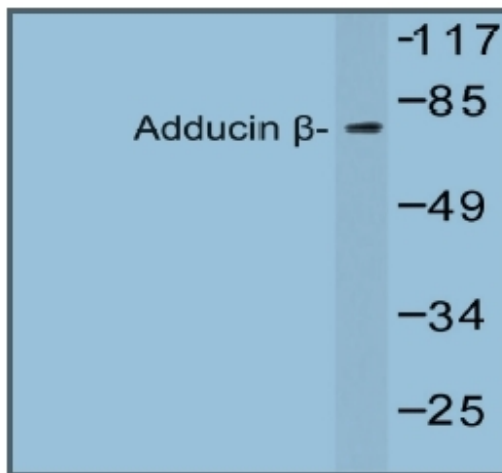
Adducins are a family of cytoskeleton proteins encoded by three genes (alpha, beta and gamma). Adducin is a protein associated with the inner leaflet of the plasma membrane and is one of the proteins localized at the spectrin-actin junction of the membrane skeleton. The cortical actin cytoskeletal network is lost during apoptosis and adducins are central in the cortical actin network organization. Adducin alpha is a cytoskeletal protein involved with sodium-pump activity in the renal tubule and is associated with hypertension. The expression of Adducin alpha and Adducin gamma is ubiquitous in contrast to the restricted expression of Adducin beta. Adducin beta is expressed at high levels in brain and hematopoietic tissues, such as bone marrow in humans, and spleen in mice.

**Synonyms:**

ADDB, Adducin 2

**Product images:**


Western blot analysis of Beta-Adducin Antibody (Cat.-No AP20545PU-N) in extracts from 293 cells.



Western blot analysis of Beta-Adducin Antibody (Cat.-No AP20545PU-N) at 1/500 dilution. Lane 1: HEK293T whole cell lysate. Lane 2: Raw264.7 whole cell lysate. Lane 3: Rat spleen tissue lysate.