

Product datasheet for **AP20540PU-S**

c Abl (ABL1) Rabbit Polyclonal Antibody

Product data:

Product Type:	Primary Antibodies
Applications:	IF, IHC, WB
Recommended Dilution:	Western blot: 1/500-1/1000. Immunohistochemistry on Paraffin Sections: 1/50-1/200. Immunofluorescence: 1/50-1/200.
Reactivity:	Human, Mouse, Rat
Host:	Rabbit
Clonality:	Polyclonal
Specificity:	This antibody detects endogenous levels of c-Abl protein. (region surrounding Glu883)
Formulation:	PBS, pH~7.2 State: Aff - Purified State: Liquid purified Ig fraction (> 95% by SDS-PAGE) Preservative: 0.05% Sodium Azide
Concentration:	1.0 mg/ml
Purification:	Affinity Chromatography using epitope-specific immunogen
Conjugation:	Unconjugated
Storage:	Store undiluted at 2-8°C for one month or (in aliquots) at -20°C for longer. Avoid repeated freezing and thawing.
Stability:	Shelf life: one year from despatch.
Predicted Protein Size:	~ 123 kDa
Gene Name:	ABL proto-oncogene 1, non-receptor tyrosine kinase
Database Link:	<u>Entrez Gene 11350 Mouse</u> <u>Entrez Gene 311860 Rat</u> <u>Entrez Gene 25 Human P00519</u>



[View online »](#)

Background:

The Abl oncogene was initially identified as the viral transforming gene of Abelson murine leukemia virus (A-MuLV). The major translational product of c-Abl has been identified as a protein with tyrosine kinase activity and an SH2 domain. The Abl oncogene is implicated in several human leukemias including 90-95% of chronic myelocytic leukemia (CML), 20-25% of adult acute lymphoblastic leukemia (ALL) and 2-5% of pediatric ALL. In these leukemias the c-Abl proto-oncogene undergoes a (9;22) chromosomal translocation producing the Philadelphia (Ph1) chromosome. The molecular consequence of this translocation is the generation of a chimeric Bcr/c-Abl mRNA encoding activated Abl protein-tyrosine kinase. The Bcr gene has been shown to encode a GTPase-activating protein (GAP) specific for the Ras-related GTP-binding protein, p21rac.

Synonyms:

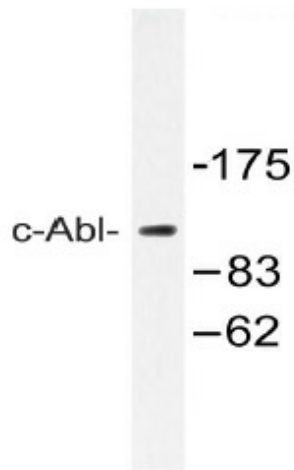
c-ABL, p150, JTK7, bcr/abl

Protein Families:

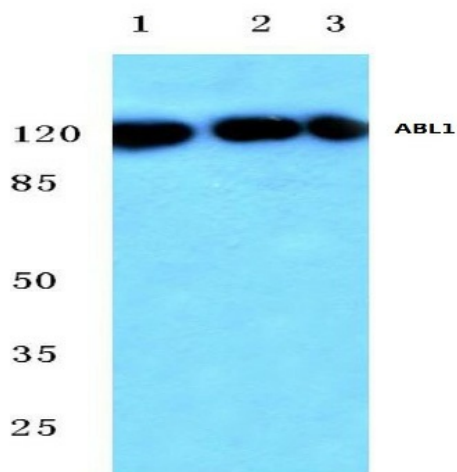
Druggable Genome, Protein Kinase, Transcription Factors

Protein Pathways:

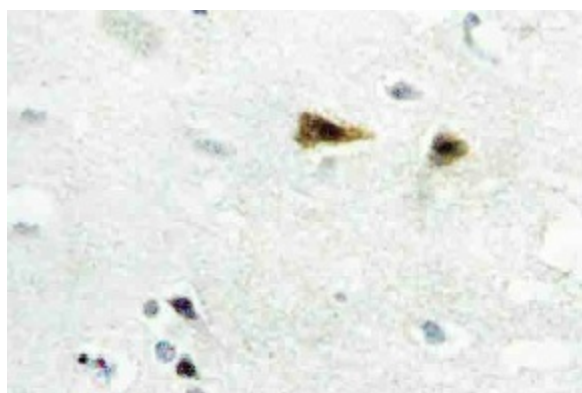
Axon guidance, Cell cycle, Chronic myeloid leukemia, ErbB signaling pathway, Neurotrophin signaling pathway, Pathogenic Escherichia coli infection, Pathways in cancer, Viral myocarditis

Product images:

Western blot analysis of c-Abl antibody Cat.-No. [AP20540PU-N] in extracts from 293 cells.



Western blot analysis of c-Abl antibody Cat.-No [AP20540PU-N] at 1/500 dilution in HepG2 whole cell lysate (Lane 1), Mouse (Lane 2) and Rat (Lane 3) liver tissue lysates.



Immunohistochemistry analysis of c-Abl antibody Cat.-No. [AP20540PU-N] in paraffin-embedded human brain tissue.