

Product datasheet for **AP20540PU-N**

c Abl (ABL1) Rabbit Polyclonal Antibody

Product data:

| | |
|-------------------------|-------------------------------------------------------------------------------------------------------------------------------------------------|
| Product Type: | Primary Antibodies |
| Applications: | IF, IHC, WB |
| Recommended Dilution: | Western blot: 1/500-1/1000. Immunohistochemistry on Paraffin Sections: 1/50-1/200. Immunofluorescence: 1/50-1/200. |
| Reactivity: | Human, Mouse, Rat |
| Host: | Rabbit |
| Clonality: | Polyclonal |
| Specificity: | This antibody detects endogenous levels of c-Abl protein. (region surrounding Glu883) |
| Formulation: | PBS, pH~7.2 State: Aff - Purified State: Liquid purified Ig fraction (> 95% by SDS-PAGE) Preservative: 0.05% Sodium Azide |
| Concentration: | 1.0 mg/ml |
| Purification: | Affinity Chromatography using epitope-specific immunogen |
| Conjugation: | Unconjugated |
| Storage: | Store undiluted at 2-8°C for one month or (in aliquots) at -20°C for longer. Avoid repeated freezing and thawing. |
| Stability: | Shelf life: one year from despatch. |
| Predicted Protein Size: | ~ 123 kDa |
| Gene Name: | ABL proto-oncogene 1, non-receptor tyrosine kinase |
| Database Link: | <u>Entrez Gene 11350 Mouse</u> <u>Entrez Gene 311860 Rat</u> <u>Entrez Gene 25 Human P00519</u> |



[View online »](#)

Background:

The Abl oncogene was initially identified as the viral transforming gene of Abelson murine leukemia virus (A-MuLV). The major translational product of c-Abl has been identified as a protein with tyrosine kinase activity and an SH2 domain. The Abl oncogene is implicated in several human leukemias including 90-95% of chronic myelocytic leukemia (CML), 20-25% of adult acute lymphoblastic leukemia (ALL) and 2-5% of pediatric ALL. In these leukemias the c-Abl proto-oncogene undergoes a (9;22) chromosomal translocation producing the Philadelphia (Ph1) chromosome. The molecular consequence of this translocation is the generation of a chimeric Bcr/c-Abl mRNA encoding activated Abl protein-tyrosine kinase. The Bcr gene has been shown to encode a GTPase-activating protein (GAP) specific for the Ras-related GTP-binding protein, p21rac.

Synonyms:

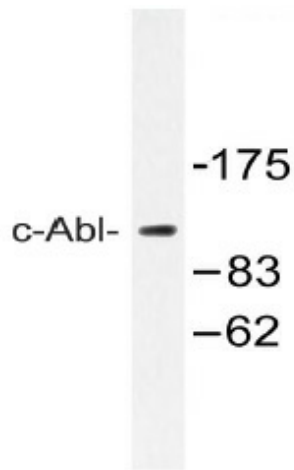
c-ABL, p150, JTK7, bcr/abl

Protein Families:

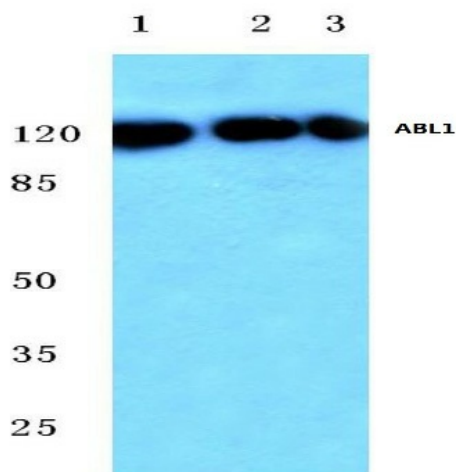
Druggable Genome, Protein Kinase, Transcription Factors

Protein Pathways:

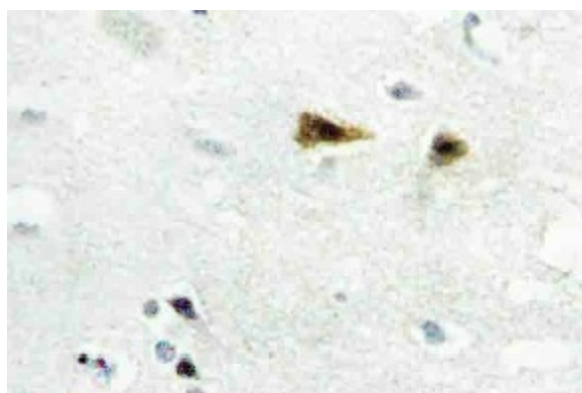
Axon guidance, Cell cycle, Chronic myeloid leukemia, ErbB signaling pathway, Neurotrophin signaling pathway, Pathogenic Escherichia coli infection, Pathways in cancer, Viral myocarditis

Product images:

Western blot analysis of c-Abl antibody Cat.-No. AP20540PU-N in extracts from 293 cells.



Western blot analysis of c-Abl antibody Cat.-No AP20540PU-N at 1/500 dilution in HepG2 whole cell lysate (Lane 1), Mouse (Lane 2) and Rat (Lane 3) liver tissue lysates.



Immunohistochemistry analysis of c-Abl antibody Cat.-No. AP20540PU-N in paraffin-embedded human brain tissue.