

## Product datasheet for **AP20536PU-N**

### DLX4 Rabbit Polyclonal Antibody

#### Product data:

Product Type:	Primary Antibodies
Applications:	IF, IHC, WB
Recommended Dilution:	<b>Western blot:</b> 1/500 - 1/1000. <b>Immunohistochemistry on paraffin sections</b> 1/50 - 1/200. <b>Immunofluorescence:</b> 1/50 - 1/200.
Reactivity:	Human
Host:	Rabbit
Clonality:	Polyclonal
Specificity:	This antibody detects endogenous levels of Dlx-4 protein. (region surrounding Gln90)
Formulation:	Phosphate buffered saline (PBS), pH 7.2. State: Aff - Purified State: Liquid purified Ig fraction Preservative: 0.05% sodium azide
Concentration:	1.0 mg/ml
Purification:	Affinity chromatography (> 95% (by SDS-PAGE)
Conjugation:	Unconjugated
Storage:	Store undiluted at 2-8°C for one month or (in aliquots) at -20°C for longer. Avoid repeated freezing and thawing.
Stability:	Shelf life: one year from despatch.
Predicted Protein Size:	~ 34 kDa
Gene Name:	distal-less homeobox 4
Database Link:	<a href="#">Entrez Gene 1748 Human</a> <a href="#">Q92988</a>



[View online »](#)

**Background:**

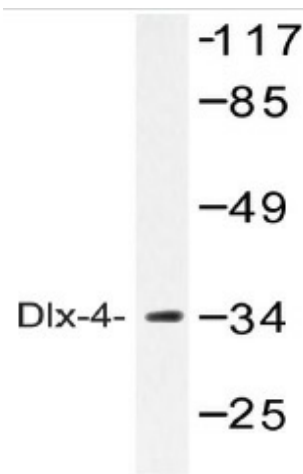
Dlx genes are a highly conserved family of six different (Dlx1–6) homeo boxcontaining genes that share homology with distal-less (Dll), a gene expressed in the head and limbs of the developing fruit fly. Dlx genes are expressed in spatially and temporally restricted patterns in craniofacial primordi,a basal telencephalon and diencephalon, and in distal regions of extending appendages, including the limb and the genital bud. The differential expression of Dlx influences patterning, morphogenesis and histogenesis in these tissues. The Dlx gene products can activate transcription and are localized primarily to the nucleus, although Dlx-5 can be found in the cytoplasm. Dlx proteins influence different stages of proper tissue development, including patterning of the orofacial skeleton (craniofacial ectomesenchyme) and differentiation of structures within and between teeth.

**Synonyms:**

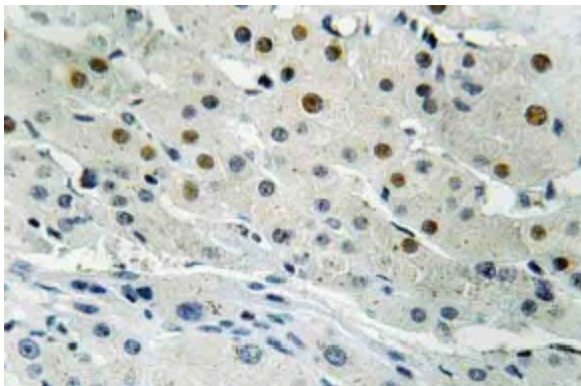
Homeobox protein DLX-4, DLX-7, DLX-8, Beta protein 1, DLX7, DLX8, DLX9

**Protein Families:**

Transcription Factors

**Product images:**

Western blot (WB) analysis of Dlx-4 antibody (Cat.-No.: AP20536PU-N) in extracts from COLO cells.



Immunohistochemistry (IHC) analyzes of Dlx-4 antibody (Cat.-No.: AP20536PU-N) in paraffin-embedded human liver carcinoma tissue.