

Product datasheet for **AP20534PU-N**

DOK6 Rabbit Polyclonal Antibody

Product data:

Product Type:	Primary Antibodies
Applications:	IF, IHC, WB
Recommended Dilution:	Western blot: 1/500 - 1/1000. Immunohistochemistry on paraffin sections 1/50 - 1/200. Immunofluorescence: 1/50 - 1/200.
Reactivity:	Human, Mouse
Host:	Rabbit
Clonality:	Polyclonal
Specificity:	This antibody detects endogenous levels of Dok-6 protein. (region surrounding Gly130)
Formulation:	Phosphate buffered saline (PBS), pH 7.2. State: Aff - Purified State: Liquid purified Ig fraction Preservative: 0.05% sodium azide
Concentration:	1.0 mg/ml
Purification:	Affinity chromatography (> 95% (by SDS-PAGE)
Conjugation:	Unconjugated
Storage:	Store the antibody undiluted at 2-8°C for one month or (in aliquots) at -20°C for longer. Avoid repeated freezing and thawing.
Stability:	Shelf life: one year from despatch.
Predicted Protein Size:	~ 43 kDa
Gene Name:	docking protein 6
Database Link:	Entrez Gene 623279 Mouse Entrez Gene 220164 Human Q6PKX4



[View online »](#)

Background:

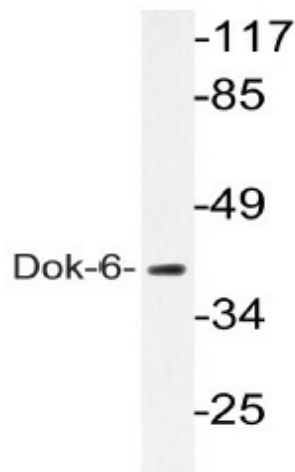
The downstream of kinase family (Dok1-6) are members of a class of “docking” proteins that include the tyrosine kinase substrates IRS-1 and Cas, which contain multiple tyrosine residues and putative SH2 binding sites. Dok-4, Dok-5 and Dok-6 are more similar to each other than to the other Dok family members, and may constitute a subfamily of the DOK genes. Dok-5 is a tyrosine kinase substrate that enhances c-Ret-dependent activation of mitogen-activated protein kinase (MAPK). Dok-5 transcript is abundant in muscle and increases during T cell activation. Dok-5 protein undergoes tyrosine phosphorylation in response to insulin and insulin-like growth factor-1. The gene encoding human Dok-5 maps to chromosomal location 20q13.2. Dok-6 is highly expressed in the developing central nervous system. It associates with Ret to transduce Ret-mediated processes such as axonal projection.

Synonyms:

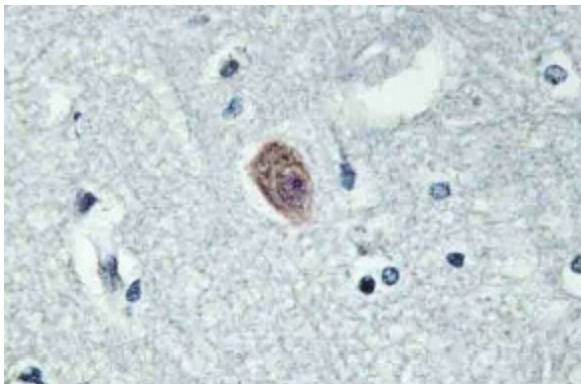
Docking protein 6

Protein Families:

Druggable Genome

Product images:

Western blot (WB) analysis of Dok-6 pAb in extracts from COLO205 cells.



Immunohistochemistry (IHC) analyzes of Dok-6 pAb in paraffin-embedded human brain tissue.