

Product datasheet for **AP20532PU-N**

CGK2 (PRKG2) Rabbit Polyclonal Antibody

Product data:

Product Type:	Primary Antibodies
Applications:	WB
Recommended Dilution:	Western blot: 1/500 - 1/1000.
Reactivity:	Human, Mouse, Rat
Host:	Rabbit
Clonality:	Polyclonal
Specificity:	This antibody detects endogenous levels of cGKii protein. (region surrounding Asp412)
Formulation:	Phosphate buffered saline (PBS), pH 7.2. State: Aff - Purified State: Liquid purified Ig fraction Preservative: 15 mM sodium azide
Concentration:	1.0 mg/ml
Purification:	Affinity chromatography (> 95% (by SDS-PAGE)
Conjugation:	Unconjugated
Storage:	Store undiluted at 2-8°C for one month or (in aliquots) at -20°C for longer. Avoid repeated freezing and thawing.
Stability:	Shelf life: one year from despatch.
Predicted Protein Size:	~ 90 kDa
Gene Name:	protein kinase, cGMP-dependent, type II
Database Link:	Entrez Gene 19092 Mouse Entrez Gene 25523 Rat Entrez Gene 5593 Human Q13237



[View online »](#)

Background:

cGKII (cGMP-dependent protein kinase type II) is a major receptor of intracellular cGMP, and mediates a plethora of physiological responses. cGKII has a predicted molecular weight of 86 kD, and contains a conserved leucine zipper motif at the amino terminus. It is expressed in small intestine, colon, prostate, and human brain tissues, and the cGKII gene maps to chromosome 4q13.1-q21.1. cGKII has been shown to regulate the ion transport system in the intestine. Myristoylation of the penultimate glycine in cGKII appears to be essential for directing cGKII to the membrane, since cGKII is devoid of any hydrophobic transmembrane domains. The translocation of cGKII from the cytosol to the membrane allows it to function properly in regulating intestinal ion transport.

Synonyms:

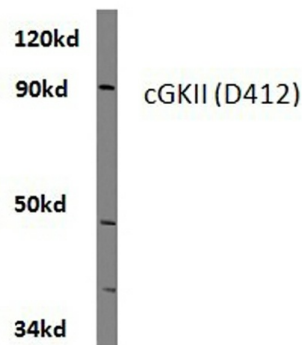
PRKG2, PRKGR2, cGKII

Protein Families:

Druggable Genome, Protein Kinase

Protein Pathways:

Gap junction, Long-term depression, Olfactory transduction

Product images:

Western blot (WB) analysis of cGKii antibody (Cat. No.: AP2483PU-N) in extracts from hela cells.

Hela whole cell lysate
cGKII (D412) pAb at 1:500 dilution