

## Product datasheet for **AP20531PU-N**

### **PITX1 Rabbit Polyclonal Antibody**

#### **Product data:**

Product Type:	Primary Antibodies
Applications:	IHC, WB
Recommended Dilution:	<b>Western blot:</b> 1/500 - 1/1000. <b>Immunohistochemistry on paraffin sections</b> 1/50 - 1/200.
Reactivity:	Human, Mouse, Rat
Host:	Rabbit
Clonality:	Polyclonal
Specificity:	This antibody detects endogenous levels of Pitx1 protein. (region surrounding Glu130)
Formulation:	Phosphate buffered saline (PBS), pH 7.2. State: Aff - Purified State: Liquid purified Ig fraction Preservative: 0.05% sodium azide
Concentration:	1.0 mg/ml
Purification:	Affinity chromatography (> 95% (by SDS-PAGE)
Conjugation:	Unconjugated
Storage:	Store undiluted at 2-8°C for one month or (in aliquots) at -20°C for longer. Avoid repeated freezing and thawing.
Stability:	Shelf life: one year from despatch.
Predicted Protein Size:	~ 34 kDa
Gene Name:	paired like homeodomain 1
Database Link:	<u><a href="#">Entrez Gene 18740 Mouse</a></u> <u><a href="#">Entrez Gene 113983 Rat</a></u> <u><a href="#">Entrez Gene 5307 Human</a></u> <u><a href="#">P78337</a></u>



[View online »](#)

**Background:**

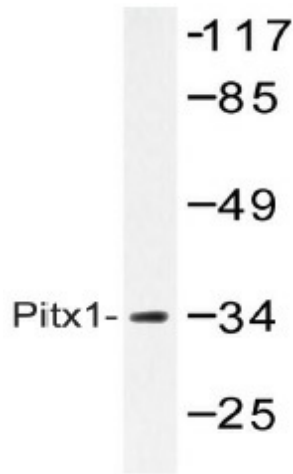
Pitx1 and Pitx2 are highly homologous, bicoid-related transcription factors. Pitx1 is a bicoid-related homeodomain factor that exhibits preferential expression in the hindlimb, as well as expression in the developing anterior pituitary gland and first branchial arch. Deletion of the Pitx1 locus results in decreased distal expression of the hindlimb-specific marker, the T-box factor (Tbx4). Pitx1 may modulate morphogenesis, growth and patterning of a specific hindlimb region, and serves as a component of the variables that influence morphological and growth distinctions in forelimb and hindlimb identity.

**Synonyms:**

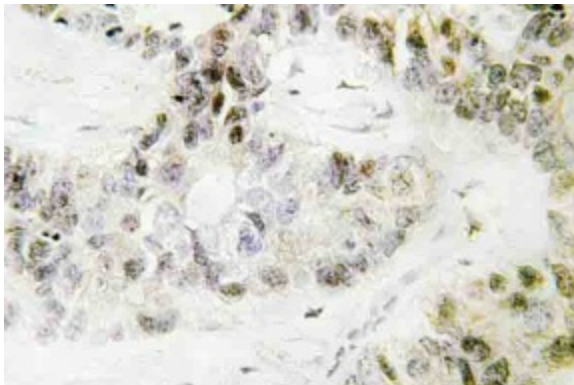
Pituitary homeobox 1, BFT, PTX1

**Protein Families:**

Transcription Factors

**Product images:**

Western blot (WB) analysis of Pitx1 antibody (Cat.-No.: AP20531PU-N) in extracts from Jurkat cells.



Immunohistochemistry (IHC) analyzes of Pitx1 antibody (Cat.-No.: AP20531PU-N) in paraffin-embedded human lung carcinoma tissue.