

## Product datasheet for **AP20530PU-N**

### SOX8 Rabbit Polyclonal Antibody

#### Product data:

Product Type:	Primary Antibodies
Applications:	IHC, WB
Recommended Dilution:	<b>Western blot:</b> 1/500 - 1/1000. <b>Immunohistochemistry on paraffin sections</b> 1/50 - 1/200.
Reactivity:	Human, Mouse
Host:	Rabbit
Clonality:	Polyclonal
Specificity:	This antibody detects endogenous levels of Sox-8/9/17/18 protein. (region surrounding Lys148)
Formulation:	Phosphate buffered saline (PBS), pH 7.2. State: Aff - Purified State: Liquid purified Ig fraction Preservative: 0.05% sodium azide
Concentration:	1.0 mg/ml
Purification:	Affinity chromatography (> 95% (by SDS-PAGE)
Conjugation:	Unconjugated
Storage:	Store undiluted at 2-8°C for one month or (in aliquots) at -20°C for longer. Avoid repeated freezing and thawing.
Stability:	Shelf life: one year from despatch.
Predicted Protein Size:	~ 47 kDa
Gene Name:	SRY-box 8
Database Link:	<a href="#">Entrez Gene 20681 Mouse</a> <a href="#">Entrez Gene 30812 Human</a> <a href="#">P57073</a>



[View online »](#)

**Background:**

Sox genes comprise a family of genes that are related to the mammalian sex determining gene SRY. These genes similarly contain sequences that encode for the HMG-box domain, which is responsible for the sequence-specific DNA-binding activity. Sox genes encode putative transcriptional regulators implicated in the decision of cell fates during development and the control of diverse developmental processes. The highly complex group of Sox genes cluster at a minimum of 40 different loci that rapidly diverged in various animal lineages. At present 30 Sox genes have been identified, and members of this family have been shown to be conserved during evolution and to play key roles during animal development. Some are involved in human diseases, including sex reversal.

**Synonyms:**

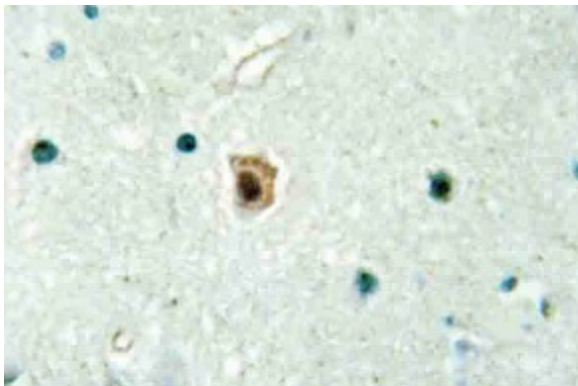
SOX-8, SOX-9, SOX-17, SOX-18

**Protein Families:**

Transcription Factors

**Product images:**

Western blot (WB) analysis of Sox-8/9/17/18 antibody (Cat.-No.: AP20530PU-N) in extracts from COS7 cells.



Immunohistochemistry (IHC) analyzes of Sox-8/9/17/18 antibody (Cat.-No.: AP20530PU-N) in paraffin-embedded human brain tissue.