

Product datasheet for **AP20525PU-N**

RBM5 Rabbit Polyclonal Antibody

Product data:

Product Type:	Primary Antibodies
Applications:	IHC, WB
Recommended Dilution:	Western blot: 1/500 - 1/1000. Immunohistochemistry on paraffin sections 1/50 - 1/200.
Reactivity:	Human, Mouse
Host:	Rabbit
Clonality:	Polyclonal
Specificity:	This antibody detects endogenous levels of LUCA15 protein. (region surrounding asn261)
Formulation:	Phosphate buffered saline (PBS), pH 7.2. State: Aff - Purified State: Liquid purified Ig fraction Preservative: 0.05% sodium azide
Concentration:	1.0 mg/ml
Purification:	Affinity chromatography (> 95% (by SDS-PAGE)
Conjugation:	Unconjugated
Storage:	Store undiluted at 2-8°C for one month or (in aliquots) at -20°C for longer. Avoid repeated freezing and thawing.
Stability:	Shelf life: one year from despatch.
Predicted Protein Size:	~ 92 kDa
Gene Name:	RNA binding motif protein 5
Database Link:	Entrez Gene 83486 Mouse Entrez Gene 10181 Human P52756



[View online »](#)

Background:

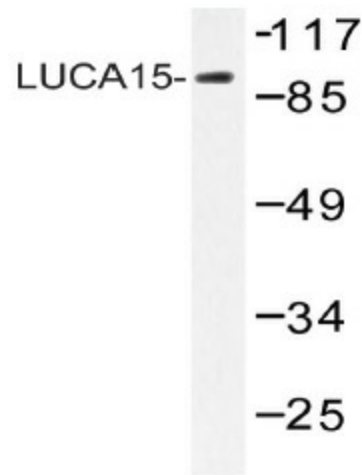
DEF-3 and LUCA15 belong to an evolutionarily conserved family of RNA binding proteins and share similar expression patterns. Both DEF-3 and LUCA15 are highly expressed in adult heart and thymus as well as fetal kidney. Conversely, fetal thymus and adult kidney express very little DEF-3 and LUCA15. In the haemopoietic system of mice, the expression of DEF-3 is downregulated upon differentiation of progenitor cells into granulocytes but persists during macrophage development. Both DEF-3 and LUCA15 contain two zinc finger motifs, a bipartite nuclear signal and two RNA binding motifs. DEF-3 and LUCA15 are capable of specifically binding poly(G) RNA.

Synonyms:

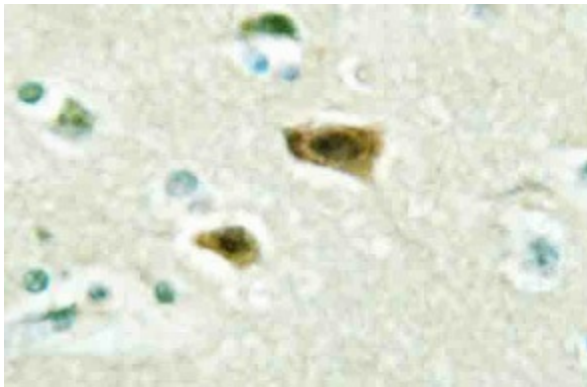
RNA-binding protein 5, NY-REN-9

Protein Families:

Druggable Genome

Product images:

Western blot (WB) analysis of LUCA15 antibody (Cat.-No.: AP20525PU-N) in extracts from HHUVEC cells.



Immunohistochemistry (IHC) analyzes of LUCA15 antibody (Cat.-No.: AP20525PU-N) in paraffin-embedded human brain tissue.