

Product datasheet for **AP20522PU-N**

CD147 (BSG) Rabbit Polyclonal Antibody

Product data:

| | |
|-------------------------|---|
| Product Type: | Primary Antibodies |
| Applications: | IHC, WB |
| Recommended Dilution: | Western blot: 1/500-1/1000. Immunohistochemistry on Paraffin Sections: 1/50-1/200. |
| Reactivity: | Human, Mouse, Rat |
| Host: | Rabbit |
| Clonality: | Polyclonal |
| Specificity: | This antibody detects endogenous levels of EMMPRIN protein. (region surrounding Gln370) |
| Formulation: | Phosphate buffered saline (PBS), pH~7.2 State: Aff - Purified State: Liquid purified Ig fraction (> 95% pure by SDS-PAGE) Preservative: 0.05% Sodium Azide |
| Concentration: | 1.0 mg/ml |
| Purification: | Affinity Chromatography using epitope-specific immunogen |
| Conjugation: | Unconjugated |
| Storage: | Store undiluted at 2-8°C for one month or (in aliquots) at -20°C for longer. Avoid repeated freezing and thawing. |
| Stability: | Shelf life: one year from despatch. |
| Predicted Protein Size: | ~42 kDa |
| Gene Name: | basigin (Ok blood group) |
| Database Link: | Entrez Gene 12215 Mouse Entrez Gene 25246 Rat Entrez Gene 682 Human P35613 |



[View online »](#)

Background:

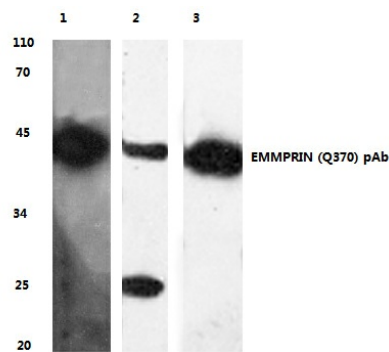
CD147 plays a pivotal role in spermatogenesis, embryo implantation, neural network formation and tumor progression. It stimulates adjacent fibroblasts to produce matrix metalloproteinases (MMPs). CD147 may target monocarboxylate transporters SLC16A1, SLC16A3 and SLC16A8 to plasma membranes of retinal pigment epithelium and neural retina. CD147 also seems to be a receptor for oligomannosidic glycans. In vitro, it promotes outgrowth of astrocytic processes. CD147 forms homooligomers in a cis-dependent manner on the plasma membrane. It forms a complex with MMP1 at the tumor cell surface. CD147 interacts with SLC16A1 and SLC1A3; probably a BSG dimer is associated with a monocarboxylate transporter dimer. CD147 also interacts with ATP1B2, MAG and L1CAM.

Synonyms:

Basigin, BSG, EMMPRIN, TCSF

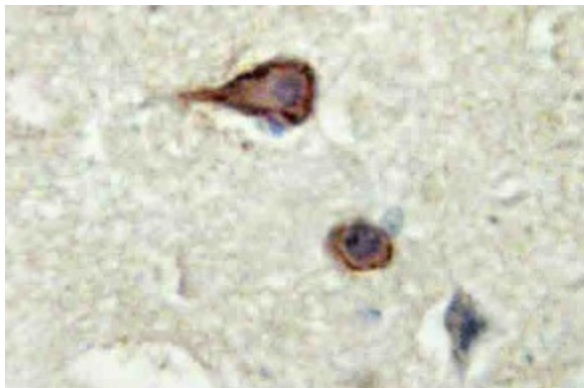
Protein Families:

Druggable Genome, ES Cell Differentiation/IPS, Transmembrane

Product images:


Lane1: HEK293T whole cell lysate treated with UV
 Lane2: RAW264.7 whole cell lysate
 Lane3: Mouse heart tissue lysate
 EMMPRIN (Q370) pAb at 1:500 dilution

Western blot (WB) analysis of BSG/EMMPRIN antibody (Cat.-No.: AP20522PU-N)



Immunohistochemistry analysis of EMMPRIN Antibody (Cat.-No AP20522PU-N) in paraffin-embedded human brain tissue.