

## Product datasheet for **AP20520PU-N**

### TCF3 / E2A (TCF3) Rabbit Polyclonal Antibody

#### Product data:

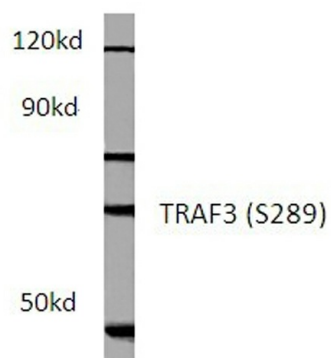
Product Type:	Primary Antibodies
Applications:	IHC, WB
Recommended Dilution:	<b>Western blot:</b> 1/500 - 1/1000. <b>Immunohistochemistry on paraffin sections</b> 1/50 - 1/200.
Reactivity:	Human, Mouse, Rat
Host:	Rabbit
Clonality:	Polyclonal
Specificity:	This antibody detects endogenous levels of TCF-3 protein. (region surrounding asn601)
Formulation:	Phosphate buffered saline (PBS), pH 7.2. State: Aff - Purified State: Liquid purified Ig fraction Preservative: 15 mM sodium azide
Concentration:	1.0 mg/ml
Purification:	Affinity chromatography (> 95% (by SDS-PAGE)
Conjugation:	Unconjugated
Storage:	Store undiluted at 2-8°C for one month or (in aliquots) at -20°C for longer. Avoid repeated freezing and thawing.
Stability:	Shelf life: one year from despatch.
Predicted Protein Size:	~ 60 kDa
Gene Name:	transcription factor 3
Database Link:	<a href="#">Entrez Gene 21423 Mouse</a> <a href="#">Entrez Gene 171046 Rat</a> <a href="#">Entrez Gene 6929 Human</a> <a href="#">P15923</a>
Background:	Heterodimers between TCF3 and tissue specific basic helix loop helix (bHLH) proteins play major roles in determining tissue specific cell fate during embryogenesis, like muscle or early B cell differentiation. Dimers bind DNA on E box motifs: 5' CANNTG 3'. Binds to the kappa E2 site in the kappa immunoglobulin gene enhancer.
Synonyms:	Transcription factor 3, TCF-3, Transcription factor E2-alpha, ITF1, ITF-1



[View online »](#)

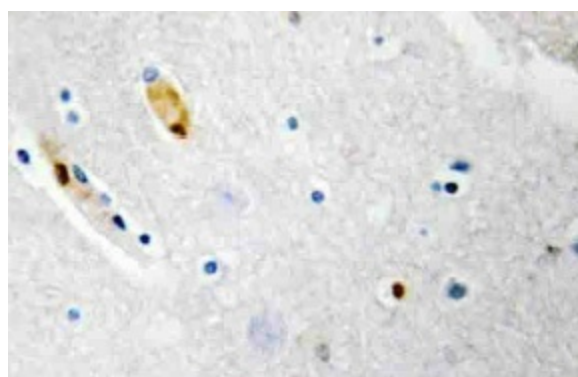
**Protein Families:** Druggable Genome, ES Cell Differentiation/IPS, Induced pluripotent stem cells, Transcription Factors

**Product images:**



A549 whole cell lysate  
TRAF3 (S289) pAb at 1:500 dilution

Western blot (WB) analysis of TCF-3 antibody (Cat.-No.: AP20520PU-N) in extracts from hela cells.



Immunohistochemistry (IHC) analyzes of TCF-3 antibody (Cat.-No.: AP20520PU-N) in paraffin-embedded human brain tissue.