

## Product datasheet for **AP20515PU-N**

### LMX1B Rabbit Polyclonal Antibody

#### Product data:

Product Type:	Primary Antibodies
Applications:	IHC, WB
Recommended Dilution:	<b>Western blot:</b> 1/500 - 1/1000. <b>Immunohistochemistry on paraffin sections</b> 1/50 - 1/200.
Reactivity:	Human, Mouse
Host:	Rabbit
Clonality:	Polyclonal
Specificity:	This antibody detects endogenous levels of LMX1B protein. (region surrounding Asp159)
Formulation:	Phosphate buffered saline (PBS), pH 7.2. State: Aff - Purified State: Liquid purified Ig fraction Preservative: 15 mM sodium azide
Concentration:	1.0 mg/ml
Purification:	Affinity chromatography (> 95% (by SDS-PAGE)
Conjugation:	Unconjugated
Storage:	Store undiluted at 2-8°C for one month or (in aliquots) at -20°C for longer. Avoid repeated freezing and thawing.
Stability:	Shelf life: one year from despatch.
Predicted Protein Size:	~ 42 kDa
Gene Name:	LIM homeobox transcription factor 1 beta
Database Link:	<a href="#">Entrez Gene 16917 Mouse</a> <a href="#">Entrez Gene 4010 Human</a> <a href="#">O60663</a>



[View online »](#)

**Background:**

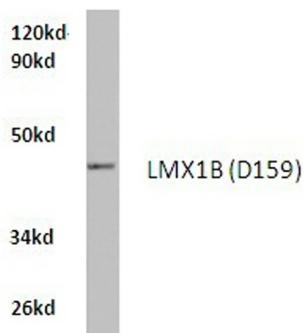
The Lim class homeobox gene Lmx1b is required for the normal development of the dopaminergic system. Loss of dopaminergic neurons is associated with one of the most prominent human neurological disorders, Parkinson's disease (PD). Dopaminergic neurons play an important role in the control of multiple brain functions including voluntary movement alongside an array of behavioral processes such as mood, reward, addiction, and stress. Lmx1b is one of several transcription factors involved in the generation of dopaminergic neurons in the brain.

**Synonyms:**

LMX1B, LIM homeobox transcription factor 1-beta, LIM/homeobox protein LMX1B, LIM/homeobox protein 1.2, LMX-1.2

**Protein Families:**

Transcription Factors

**Product images:**

HeLa whole cell lysate  
LMX1B (D159) pAb at 1:500 dilution

Western blot (WB) analysis of LMX1B antibody (Cat.-No.: AP20515PU-N) in extracts from hela cells.