

## Product datasheet for **AP20509PU-M**

### HGS Rabbit Polyclonal Antibody

#### Product data:

Product Type:	Primary Antibodies
Applications:	IF, IHC, WB
Recommended Dilution:	<b>Western blot:</b> 1/500-1/1000. <b>Immunofluorescence:</b> 1/50-1/200. <b>Immunohistochemistry on Paraffin Sections:</b> 1/50-1/200.
Reactivity:	Human, Mouse, Rat
Host:	Rabbit
Clonality:	Polyclonal
Specificity:	This antibody detects endogenous levels of Hrs protein. (region surrounding Arg481)
Formulation:	Phosphate buffered saline (PBS), pH~7.2 State: Aff - Purified State: Liquid purified Ig fraction (> 95% (by SDS-PAGE) Preservative: 0.05% Sodium Azide
Concentration:	1.0 mg/ml
Purification:	Affinity Chromatography using epitope-specific immunogen
Conjugation:	Unconjugated
Storage:	Store the antibody undiluted at 2-8°C for one month or (in aliquots) at -20°C for longer. Avoid repeated freezing and thawing.
Stability:	Shelf life: one year from despatch.
Predicted Protein Size:	~86 kDa
Gene Name:	hepatocyte growth factor-regulated tyrosine kinase substrate
Database Link:	<u><a href="#">Entrez Gene 15239 Mouse</a></u> <u><a href="#">Entrez Gene 56084 Rat</a></u> <u><a href="#">Entrez Gene 9146 Human</a></u> <u><a href="#">O14964</a></u>



[View online »](#)

**Background:**

The hepatocyte growth factor-regulated tyrosine kinase substrate (Hrs) is a zinc-finger protein that interacts with STAM and undergoes tyrosine phosphorylation in response to IL2, CSF2 or HGF. Hrs is involved in intracellular trafficking and signal transduction and is associated with early endosomes. H contains a phosphatidylinositol 3-phosphate-binding domain that contributes to its endosomal targeting, where Hrs colocalizes with Clathrin via a Clathrin box motif at the carboxy terminus of Hrs. Hrs is essential for ventral folding morphogenesis and shares structural similarity to the yeast protein Vps27p, which is involved in vacuolar protein sorting. The human Hrs gene, which maps to chromosome 17q25, encodes a 777 amino acid protein. In Schwann cells, Hrs colocalizes at endosomes with the tumor suppressor protein schwannomin, suggesting a role for schwannomin in Hrs-mediated cell signaling.

**Synonyms:**

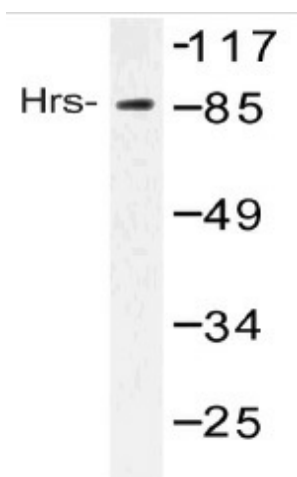
Protein pp110

**Protein Families:**

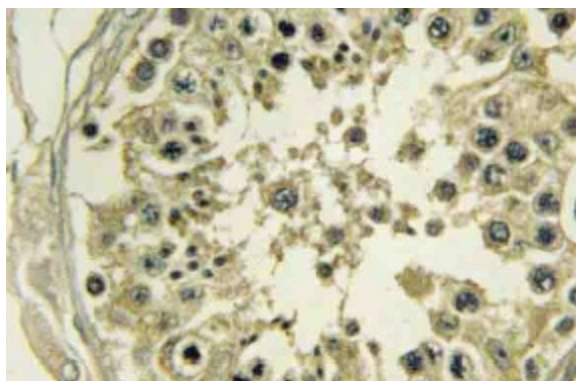
Druggable Genome

**Protein Pathways:**

Endocytosis

**Product images:**


Western blot (WB) analysis of Hrs antibody (Cat.-No.: [AP20509PU-N]) in extracts from 293 cells.



Immunohistochemistry analyzes of Hrs antibody (Cat.-No.: [AP20509PU-N]) in paraffin-embedded Human testis tissue.