

## Product datasheet for **AP20505PU-M**

### GEF H1 (ARHGEF2) Rabbit Polyclonal Antibody

#### Product data:

Product Type:	Primary Antibodies
Applications:	WB
Recommended Dilution:	<b>Western blot:</b> 1/500 - 1/1000.
Reactivity:	Human, Mouse, Rat
Host:	Rabbit
Clonality:	Polyclonal
Specificity:	This antibody detects endogenous levels of ARHGEF2 protein. (region surrounding Pro881)
Formulation:	Phosphate buffered saline (PBS), pH 7.2. State: Aff - Purified State: Liquid purified Ig fraction Preservative: 0.05% sodium azide
Concentration:	1.0 mg/ml
Purification:	Affinity chromatography (> 95% (by SDS-PAGE)
Conjugation:	Unconjugated
Storage:	Store undiluted at 2-8°C for one month or (in aliquots) at -20°C for longer. Avoid repeated freezing and thawing.
Stability:	Shelf life: one year from despatch.
Predicted Protein Size:	~ 110 kDa
Gene Name:	Rho/Rac guanine nucleotide exchange factor 2
Database Link:	<a href="#">Entrez Gene 16800 Mouse</a> <a href="#">Entrez Gene 310635 Rat</a> <a href="#">Entrez Gene 9181 Human</a> <a href="#">Q92974</a>



[View online »](#)

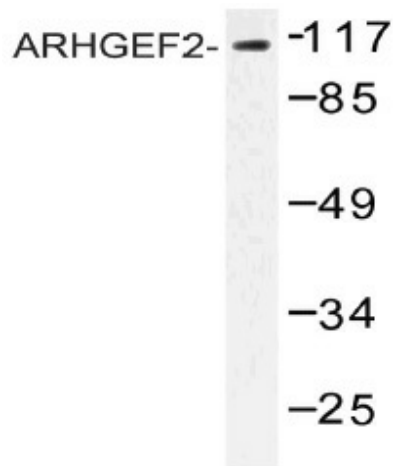
**Background:** GEFs catalyze the release of GDP from inactive Ras proteins to enable GTP binding. Lfc (also designated Rho/Rac guanine nucleotide exchange factor 2, lymphoid blast crisis-like 1, ARHGEF2, GEF-H1, KIAA0651 or LFP40) is an 894 amino acid GEF for Rho A, a member of the Ras family that regulates the Actin cytoskeleton during the formation of stress fibers. Lfc directly interacts with Cingulin, a junctional adapter that inhibits Rho A, thus preventing phorbol-12-myristate-13-acetate-induced contraction and apoptosis. Mutations in the p53 gene transcriptionally activate Lfc, thereby increasing tumor cell proliferation.

**Synonyms:** KIAA0651, LFP40, GEF-H1

**Protein Families:** Druggable Genome

**Protein Pathways:** Pathogenic Escherichia coli infection

### Product images:



Western blot (WB) analysis of ARHGEF2 antibody (Cat.-No.: [AP20505PU-N]) in extracts from NIH cells.