

Product datasheet for **AP20503PU-N**

IGFBP3 Rabbit Polyclonal Antibody

Product data:

| | |
|-------------------------|--|
| Product Type: | Primary Antibodies |
| Applications: | IHC, WB |
| Recommended Dilution: | Western blot: 1/500-1/1000. Immunohistochemistry on Paraffin Sections: 1/50-1/200. |
| Reactivity: | Human, Mouse |
| Host: | Rabbit |
| Clonality: | Polyclonal |
| Immunogen: | Synthetic peptide corresponding to region aa 150-200 of human IGFBP3 |
| Specificity: | This antibody detects endogenous levels of IGFBP3 protein. |
| Formulation: | Phosphate buffered saline (PBS), pH~7.2 State: Aff - Purified State: Liquid purified Ig fraction (> 95% pure by SDS-PAGE). Preservative: 0.05% Sodium Azide |
| Concentration: | 1.0 mg/ml |
| Purification: | Affinity Chromatography using epitope-specific immunogen. |
| Conjugation: | Unconjugated |
| Storage: | Store undiluted at 2-8°C for one month or (in aliquots) at -20°C for longer. Avoid repeated freezing and thawing. |
| Stability: | Shelf life: one year from despatch. |
| Predicted Protein Size: | ~31 kDa |
| Gene Name: | insulin like growth factor binding protein 3 |
| Database Link: | Entrez Gene 16009 Mouse Entrez Gene 3486 Human P17936 |



[View online »](#)

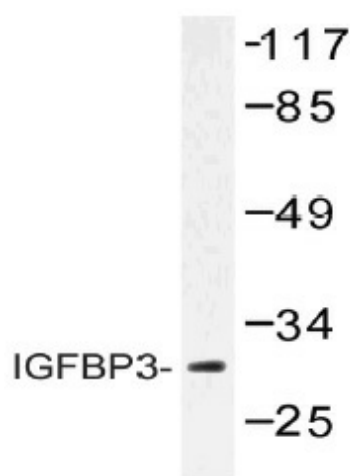
Background: Insulin like growth factor binding protein 3 (IGFBP3) is a member of the superfamily of insulin like growth factor (IGF) binding proteins which include six high affinity IGF binding proteins (IGFBP) and at least four low affinity binding proteins referred to as IGFBP related proteins (IGFBPrP). The IGFBP members are cysteine rich proteins with conserved cysteine residues clustered in the amino terminal and the carboxy terminal regions of the molecule. The cDNA sequence encoding the mature human IGFBP3 is fused to the signal peptide of CD33.

Synonyms: IGFBP-3, IGF-BP3, IBP3, Insulin-like growth factor-binding protein 3, IGF-binding protein 3, IBP-3

Protein Families: Druggable Genome, Secreted Protein

Protein Pathways: p53 signaling pathway

Product images:



Western blot (WB) analysis of IGFBP3 antibody in extracts from HUVEC cells.