

## Product datasheet for **AP20501PU-M**

### Cyclin H (CCNH) Rabbit Polyclonal Antibody

#### Product data:

Product Type:	Primary Antibodies
Applications:	WB
Recommended Dilution:	<b>Western blot:</b> 1/500 - 1/1000. <b>Immunohistochemistry on paraffin sections</b> 1/50 - 1/200. <b>Immunofluorescence:</b> 1/50 - 1/200.
Reactivity:	Human, Mouse, Rat
Host:	Rabbit
Clonality:	Polyclonal
Specificity:	This antibody detects endogenous levels of Cyclin H protein. (region surrounding Glu311)
Formulation:	Phosphate buffered saline (PBS), pH 7.2. State: Aff - Purified State: Liquid purified Ig fraction Preservative: 0.05% sodium azide
Concentration:	1.0 mg/ml
Purification:	Affinity chromatography (> 95% (by SDS-PAGE)
Conjugation:	Unconjugated
Storage:	Store undiluted at 2-8°C for one month or (in aliquots) at -20°C for longer. Avoid repeated freezing and thawing.
Stability:	Shelf life: one year from despatch.
Predicted Protein Size:	~ 38 kDa
Gene Name:	cyclin H
Database Link:	<a href="#">Entrez Gene 66671 Mouse</a> <a href="#">Entrez Gene 84389 Rat</a> <a href="#">Entrez Gene 902 Human</a> <a href="#">P51946</a>



[View online »](#)

**Background:**

Cyclin H belongs to the highly conserved cyclin family, and are regulators of CDK kinases. Different cyclins exhibit distinct expression and degradation patterns which contribute to the temporal coordination of each mitotic event. Cyclin H forms a complex with CDK7 kinase and ring finger protein MAT1. The kinase complex is able to phosphorylate CDK2 and CDC2 kinases, and thus functions as a CDK-activating kinase (CAK). Cyclin H and its kinase partner are components of TFIIH, as well as RNA polymerase II protein complexes.

**Synonyms:**

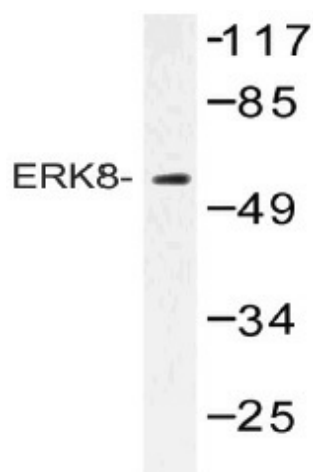
Cyclin-H, MO15-associated protein, p37, p34, CCNH

**Protein Families:**

Druggable Genome, Transcription Factors

**Protein Pathways:**

Cell cycle, Nucleotide excision repair

**Product images:**


Western blot (WB) analysis of Cyclin H antibody (Cat.-No.: Ap20501PU-N) in extracts from K562 cells.