

Product datasheet for **AP20499PU-N**

RAF1 Rabbit Polyclonal Antibody

Product data:

| | |
|-------------------------|--|
| Product Type: | Primary Antibodies |
| Applications: | WB |
| Recommended Dilution: | Western blot: 1/500-1/1000. |
| Reactivity: | Human, Mouse, Rat |
| Host: | Rabbit |
| Clonality: | Polyclonal |
| Specificity: | This antibody detects endogenous levels of Raf1 protein. |
| Formulation: | Phosphate buffered saline (PBS), pH~7.2 State: Aff - Purified State: Liquid purified IgG fraction (> 95% pure by SDS-PAGE) Preservative: 0.05% Sodium Azide |
| Concentration: | 1.0 mg/ml |
| Purification: | Affinity Chromatography using epitope-specific immunogen |
| Conjugation: | Unconjugated |
| Storage: | Store undiluted at 2-8°C for one month or (in aliquots) at -20°C for longer. Avoid repeated freezing and thawing. |
| Stability: | Shelf life: one year from despatch. |
| Predicted Protein Size: | ~ 73 kDa |
| Gene Name: | Raf-1 proto-oncogene, serine/threonine kinase |
| Database Link: | Entrez Gene 24703 Rat Entrez Gene 110157 Mouse Entrez Gene 5894 Human P04049 |



[View online »](#)

Background:

The Raf family of serine/threonine specific kinases is comprised of three members (aRaf, bRaf, and cRaf) that play a critical role in regulating cell growth and differentiation, and couple growth factor receptor stimulation to nuclear transcription factors via the Ras/mitogen activated protein kinase (MAPK) pathway. cRaf kinase (also known as Raf1) is a small GTPase like kinase of 73 kDa, and is a signal transducer of multiple extracellular stimuli that is regulated by several pathways, and that once activated, phosphorylates MEK which in turn phosphorylates ERK. Raf1 is involved in the transduction of mitogenic signals from the cell membrane to the nucleus. It is part of the Ras dependent signaling pathway from receptors to the nucleus.

Synonyms:

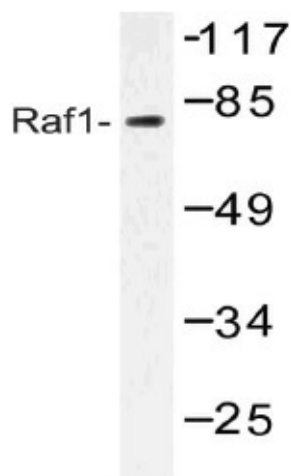
C-RAF, Raf-1, cRaf

Protein Families:

Druggable Genome, Protein Kinase

Protein Pathways:

Acute myeloid leukemia, B cell receptor signaling pathway, Bladder cancer, Chemokine signaling pathway, Chronic myeloid leukemia, Colorectal cancer, Endometrial cancer, ErbB signaling pathway, Fc epsilon RI signaling pathway, Fc gamma R-mediated phagocytosis, Focal adhesion, Gap junction, Glioma, GnRH signaling pathway, Insulin signaling pathway, Long-term depression, Long-term potentiation, MAPK signaling pathway, Melanogenesis, Melanoma, Natural killer cell mediated cytotoxicity, Neurotrophin signaling pathway, Non-small cell lung cancer, Pancreatic cancer, Pathways in cancer, Progesterone-mediated oocyte maturation, Prostate cancer, Regulation of actin cytoskeleton, Renal cell carcinoma, T cell receptor signaling pathway, Vascular smooth muscle contraction, VEGF signaling pathway

Product images:

Western blot analysis of RAF1 Antibody (Cat.-No AP20499PU-N) in extracts from HT-29 cells.