

Product datasheet for **AP20492PU-M**

RAD51C Rabbit Polyclonal Antibody

Product data:

Product Type:	Primary Antibodies
Applications:	IF, IHC, WB
Recommended Dilution:	Western blot: 1/500-1/1000. Immunohistochemistry on Paraffin Sections: 1/50-1/200.
Reactivity:	Human
Host:	Rabbit
Clonality:	Polyclonal
Specificity:	This antibody detects endogenous levels of Rad51C protein. (region surrounding Glu185)
Formulation:	Phosphate buffered saline (PBS), pH~7.2 State: Aff - Purified State: Liquid purified Ig fraction (> 95% pure by SDS-PAGE). Preservative: 0.05% Sodium Azide
Concentration:	1.0 mg/ml
Purification:	Affinity Chromatography using epitope-specific immunogen.
Conjugation:	Unconjugated
Storage:	Store undiluted at 2-8°C for one month or (in aliquots) at -20°C for longer. Avoid repeated freezing and thawing.
Stability:	Shelf life: one year from despatch.
Predicted Protein Size:	~50 kDa
Gene Name:	RAD51 paralog C
Database Link:	Entrez Gene 5889 Human O43502



[View online »](#)

Background:

The process of homologous recombination is a major DNA repair pathway that operates on DNA double-strand breaks to promote error-free repair. Human Rad51 protein assembles on a DNA molecule through cooperative binding and forms a long filament for homologous recombination. In addition to Rad51 protein, five paralogs have been identified in vertebrates, Rad51B, Rad51C, Rad51D, Xrcc2 and Xrcc3. Rad51C binds single- and double-stranded DNA and preferentially binds 3'-end-tailed double-stranded DNA. Rad51C is expressed in a variety of tissues, with highest expression in testis, heart muscle, spleen and prostate.

Synonyms:

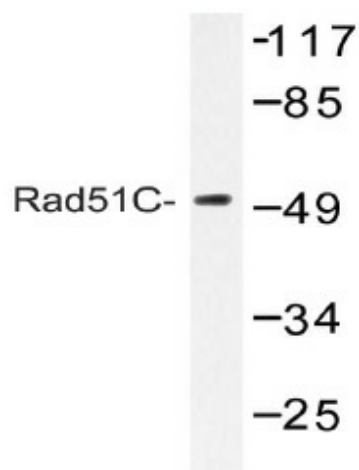
RAD51L2, R51H3, RAD51 homolog C, RAD51-like protein 2

Protein Families:

Druggable Genome

Protein Pathways:

Homologous recombination

Product images:


Western blot (WB) analysis of Rad51C antibody (Cat.-No.: [AP20492PU-N]) in extracts from COS-7 cells.