

Product datasheet for **AP20491PU-M**

MSH6 Rabbit Polyclonal Antibody

Product data:

Product Type:	Primary Antibodies
Applications:	IF, IHC, WB
Recommended Dilution:	Western blot: 1/500 - 1/1000. Immunohistochemistry on paraffin sections 1/50 - 1/200. Immunofluorescence: 1/50 - 1/200.
Reactivity:	Human, Mouse
Host:	Rabbit
Clonality:	Polyclonal
Specificity:	This antibody detects endogenous levels of GTBP protein. (region surrounding Glu371)
Formulation:	Phosphate buffered saline (PBS), pH 7.2. State: Aff - Purified State: Liquid purified Ig fraction Preservative: 0.05% sodium azide
Concentration:	1.0 mg/ml
Purification:	Affinity chromatography (> 95% (by SDS-PAGE)
Conjugation:	Unconjugated
Storage:	Store undiluted at 2-8°C for one month or (in aliquots) at -20°C for longer. Avoid repeated freezing and thawing.
Stability:	Shelf life: one year from despatch.
Predicted Protein Size:	~ 153 kDa
Gene Name:	mutS homolog 6
Database Link:	Entrez Gene 17688 Mouse Entrez Gene 2956 Human P52701

[View online »](#)

Background:

The finding that mutations in DNA mismatch repair genes are associated with hereditary nonpolyposis colorectal cancer (HNPCC) has resulted in considerable interest in the understanding of the mechanism of DNA mismatch repair. Initially, inherited mutations in the MSH2 and MLH1 homologs of the bacterial DNA mismatch repair genes MutS and MutL were demonstrated at high frequency in HNPCC and were shown to be associated with microsatellite instability. A member of the mismatch repair family, GTBP (also designated MSH6), is a 160 kDa MSH2-related protein that binds to DNA containing G/T mismatches. Findings suggest that the mismatch-binding factor in human cells is composed of a heterodimer of GTBP and MSH2.

Synonyms:

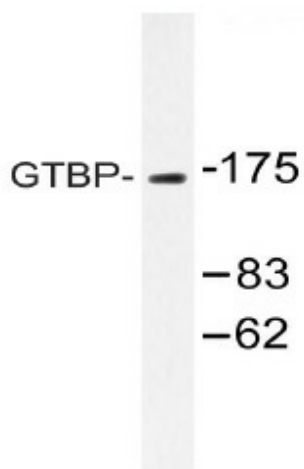
DNA mismatch repair protein Msh6, GTBP

Protein Families:

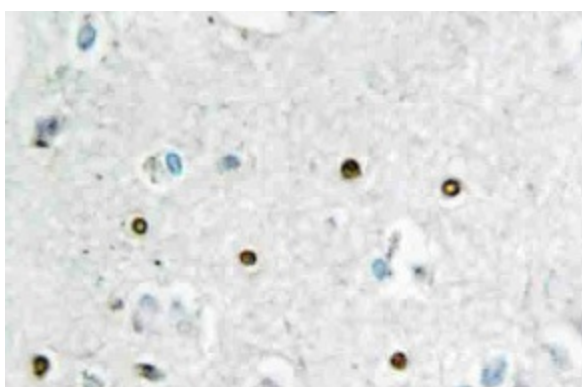
Druggable Genome, Stem cell - Pluripotency

Protein Pathways:

Colorectal cancer, Mismatch repair, Pathways in cancer

Product images:


Western blot (WB) analysis of GTBP antibody (Cat.-No.: [AP20491PU-N]) in extracts from HUVEC cells.



Immunohistochemistry (IHC) analyzes of GTBP antibody (Cat.-No.: [AP20491PU-N]) in paraffin-embedded human brain tissue.