

Product datasheet for **AP20488PU-N**

Laminin gamma 1 (LAMC1) Rabbit Polyclonal Antibody

Product data:

Product Type:	Primary Antibodies
Applications:	IF, IHC, WB
Recommended Dilution:	Western blot: 1/500-1/1000. Immunofluorescence: 1/50-1/200. Immunohistochemistry on Paraffin Sections: 1/50-1/200.
Reactivity:	Human, Mouse, Rat
Host:	Rabbit
Clonality:	Polyclonal
Specificity:	This antibody detects endogenous levels of Laminin gamma-1 protein. (region surrounding Glu1472)
Formulation:	Phosphate buffered saline (PBS), pH 7.2. State: Aff - Purified State: Liquid purified Ig fraction (> 95% pure by SDS-PAGE). Preservative: 0.09% sodium azide
Concentration:	1.0 mg/ml
Purification:	Affinity Chromatography using epitope-specific immunogen.
Conjugation:	Unconjugated
Storage:	Store undiluted at 2-8°C for one month or (in aliquots) at -20°C for longer. Avoid repeated freezing and thawing.
Stability:	Shelf life: one year from despatch.
Predicted Protein Size:	~178.0 kDa
Gene Name:	laminin subunit gamma 1
Database Link:	Entrez Gene 117036 Rat Entrez Gene 226519 Mouse Entrez Gene 3915 Human P11047



[View online »](#)

Background:

Laminins are essential and abundant structural non-collagenous glycoproteins localizing to basement membranes. Basement membranes (cell-associated extracellular matrices (ECMs)) are polymers of Laminins with stabilizing Type IV Collagen networks, Nidogen and several proteoglycans. Basement membranes are found under epithelial layers, around the endothelium of blood vessels, and surrounding muscle, peripheral nerve and fat cells. Formation of basement membranes influences cell proliferation, phenotype, migration, gene expression and tissue architecture. Each Laminin is a heterotrimer of alpha, beta and gamma chain subunits that undergoes cell-secretion and incorporation into the ECM. Laminins can self-assemble, bind to other matrix macromolecules and have unique and shared cell interactions mediated by Integrins, dystroglycan and cognate Laminin receptors. The human Laminin gamma-1 gene maps to chromosome 1q31 and is ubiquitously expressed in tissues that produce basement membranes.

Synonyms:

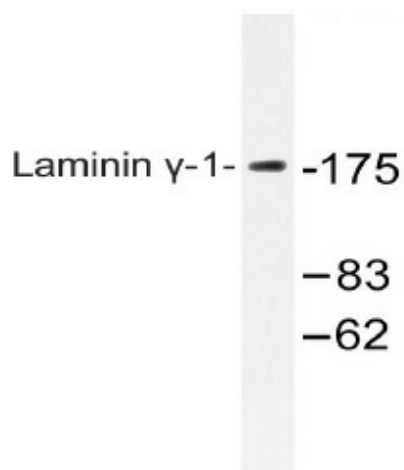
LAMC1, LAMB2, Laminin subunit gamma-1, Laminin B2 chain

Protein Families:

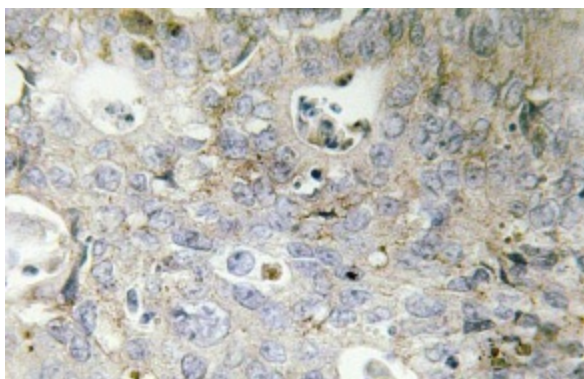
Druggable Genome, Secreted Protein

Protein Pathways:

ECM-receptor interaction, Focal adhesion, Pathways in cancer, Prion diseases, Small cell lung cancer

Product images:

Western blot (WB) analysis of Laminin gamma-1 antibody (Cat.-No.: AP20488PU-N) in extracts from HUVEC cells.



Immunohistochemistry (IHC) analyzes of Laminin gamma-1 antibody (Cat.-No.: AP20488PU-N) in paraffin-embedded human colon carcinoma tissue.