

## Product datasheet for **AP20487PU-N**

### Laminin beta 1 (LAMB1) Rabbit Polyclonal Antibody

#### Product data:

Product Type:	Primary Antibodies
Applications:	IF, IHC, WB
Recommended Dilution:	<b>Western blot:</b> 1/500-1/1000. <b>Immunofluorescence:</b> 1/50-1/200. <b>Immunohistochemistry on paraffin sections:</b> 1/50-1/200.
Reactivity:	Human, Mouse
Host:	Rabbit
Clonality:	Polyclonal
Specificity:	This antibody detects endogenous levels of Laminin beta-1 protein. (region surrounding Asp1742)
Formulation:	PBS, pH~7.2 State: Aff - Purified State: Liquid purified Ig fraction (> 95% pure by SDS-PAGE) Preservative: 0.05% Sodium Azide
Concentration:	1.0 mg/ml
Purification:	Affinity Chromatography using epitope-specific immunogen
Conjugation:	Unconjugated
Storage:	Store undiluted at 2-8°C for one month or (in aliquots) at -20°C for longer. Avoid repeated freezing and thawing.
Stability:	Shelf life: one year from despatch.
Predicted Protein Size:	~ 220 kDa
Gene Name:	laminin subunit beta 1
Database Link:	<a href="#">Entrez Gene 16777 Mouse</a> <a href="#">Entrez Gene 3912 Human</a> <a href="#">P07942</a>



[View online »](#)

**Background:**

Laminins are essential and abundant structural non-collagenous glycoproteins localizing to basement membranes. Basement membranes (cell-associated extracellular matrices (ECMs)) are polymers of Laminins with stabilizing type IV collagen networks, nidogen and several proteoglycans. Basement membranes are found under epithelial layers, around the endothelium of blood vessels and surrounding muscle, peripheral nerve and fat cells. Formation of basement membranes influences cell proliferation, phenotype, migration, gene expression and tissue architecture. Each Laminin is a heterotrimer of alpha, beta and gamma chain subunits that undergoes cell-secretion and incorporation into the ECM. Laminins can self-assemble and bind to other matrix macromolecules, and have unique and shared cell interactions mediated by Integrins, dystroglycan and cognate Laminin receptors. The human Laminin gamma-1 gene maps to chromosome 1q31 and is ubiquitously expressed in tissues that produce basement membranes.

**Synonyms:**

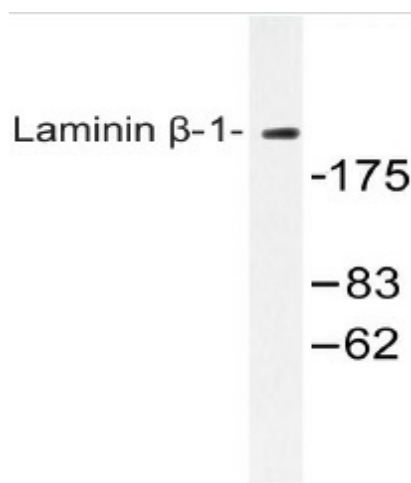
Laminin B1 chain, Laminin-1 subunit beta, Laminin-10 subunit beta, Laminin-12 subunit beta, Laminin-2 subunit beta, Laminin-6 subunit beta, Laminin-8 subunit beta

**Protein Families:**

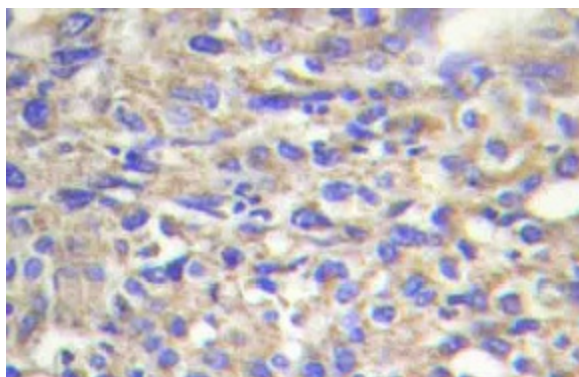
Druggable Genome, Secreted Protein

**Protein Pathways:**

ECM-receptor interaction, Focal adhesion, Pathways in cancer, Small cell lung cancer

**Product images:**

Western blot (WB) analysis of Laminin beta-1 antibody (Cat.-No.: AP20487PU-N) in extracts from HepG2 cells.



Immunohistochemistry (IHC) analyzes of Laminin beta-1 antibody (Cat.-No.: AP20487PU-N) in paraffin-embedded human liver carcinoma tissue.