

Product datasheet for **AP20483PU-M**

CYB5R3 Rabbit Polyclonal Antibody

Product data:

Product Type:	Primary Antibodies
Applications:	IF, IHC, WB
Recommended Dilution:	Western blot: 1/500 - 1/1000. Immunohistochemistry on paraffin sections 1/50 - 1/200. Immunofluorescence: 1/50 - 1/200.
Reactivity:	Human, Mouse, Rat
Host:	Rabbit
Clonality:	Polyclonal
Specificity:	This antibody detects endogenous levels of Cytochrome b5protein. (region surrounding Gly82)
Formulation:	Phosphate buffered saline (PBS) with 0.05% sodium azide, approx. pH 7.2. State: Aff - Purified State: Liquid purified Ig fraction
Concentration:	1.0 mg/ml
Purification:	Affinity chromatography (> 95% (by SDS-PAGE)
Conjugation:	Unconjugated
Storage:	Store undiluted at 2-8°C for one month or (in aliquots) at -20°C for longer. Avoid repeated freezing and thawing.
Stability:	Shelf life: one year from despatch.
Predicted Protein Size:	~ 15 kDa
Gene Name:	cytochrome b5 reductase 3
Database Link:	<u>Entrez Gene 25035 Rat</u> <u>Entrez Gene 109754 Mouse</u> <u>Entrez Gene 1727 Human</u> <u>P00387</u>



[View online »](#)

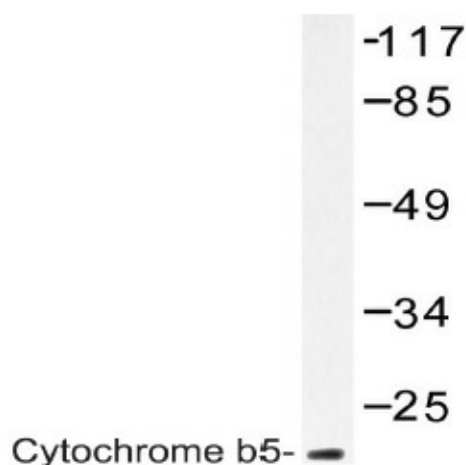
Background: Cytochrome b5 is a membrane-bound member of the cytochrome b family. A heme protein that functions as an electron carrier for many membrane-bound oxygenases, cytochrome b5 possesses two heme groups, which are not covalently attached to the protein. Two isoforms of cytochrome b5, a microsomal membrane-bound form and a cytoplasmic form, are produced by alternative splicing. Mutations in cytochrome b5 are associated with Leber's hereditary optic neuropathy and with myopathy.

Synonyms: NADH-cytochrome b5 reductase 3, B5R, DIA1, Diaphorase-1

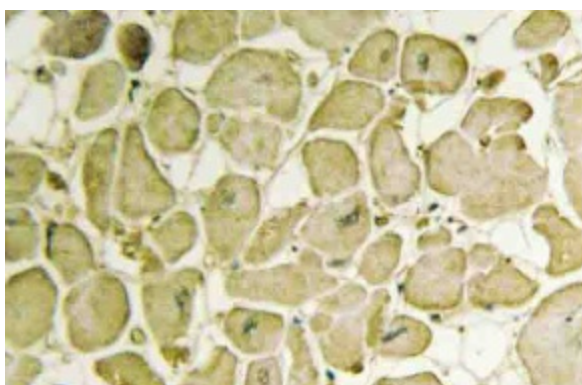
Protein Families: Druggable Genome

Protein Pathways: Amino sugar and nucleotide sugar metabolism

Product images:



Western blot (WB) analysis of Cytochrome b5 antibody (Cat.-No.: [AP20483PU-N]) in extracts from A549 cells.



Immunohistochemistry (IHC) analyzes of Cytochrome b5 antibody (Cat.-No.: [AP20483PU-N]) in paraffin-embedded human heart tissue.