

Product datasheet for **AP20482PU-M**

Clusterin (CLU) (Alpha) Rabbit Polyclonal Antibody

Product data:

Product Type:	Primary Antibodies
Applications:	IF, IHC, WB
Recommended Dilution:	Western blot: 1/500 - 1/1000. Immunohistochemistry on paraffin sections 1/50 - 1/200. Immuofluorescence: 1/50 - 1/200.
Reactivity:	Human, Mouse, Rat
Host:	Rabbit
Clonality:	Polyclonal
Specificity:	This antibody detects endogenous levels of Clusterin-alpha protein. (region surrounding Glu436)
Formulation:	Phosphate buffered saline (PBS), pH 7.2. State: Aff - Purified State: Liquid purified Ig fraction Preservative: 0.05% sodium azide
Concentration:	1.0 mg/ml
Purification:	Affinity chromatography (> 95% (by SDS-PAGE)
Conjugation:	Unconjugated
Storage:	Store undiluted at 2-8°C for one month or (in aliquots) at -20°C for longer. Avoid repeated freezing and thawing.
Stability:	Shelf life: one year from despatch.
Predicted Protein Size:	~ 52,70 kDa
Gene Name:	clusterin
Database Link:	<u>Entrez Gene 12759 Mouse</u> <u>Entrez Gene 24854 Rat</u> <u>Entrez Gene 1191 Human</u> <u>P10909</u>



[View online »](#)

Background:

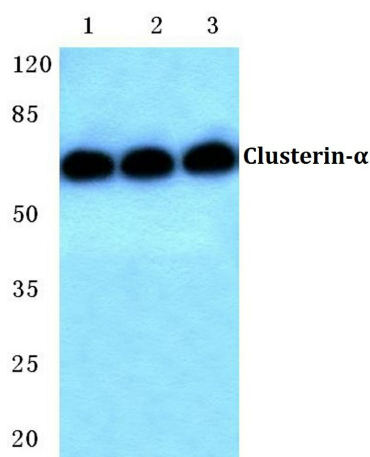
Clusterin, also designated complement lysis inhibitor (CLI), apolipoprotein J (APOJ), sulfated glycoprotein 2 (SGP2), SP-40 and testosterone-repressed prostate message 2 (TRPM2), is a secretory, heterodimeric glycoprotein that influences immune regulation, cell adhesion, transformation, lipid transportation, tissue remodeling, membrane recycling and cell-cell interactions. Clusterin is synthesized as a 449 amino acid poly-peptide that is posttranslationally cleaved at an internal bond between Arg 227 and Ser 228. Two subunits, alpha and beta, are associated through disulfide bonds. The beta subunit (also called ApoJalpha) corresponds to residues 23-227. The alpha subunit (also called Apojbeta) corresponds to residues 228-449. Overexpression of Clusterin appears to be more common in late stages of mammary tumor progression. Clusterin markedly influences beta-Amyloid structure and neuritic toxicity in vivo and may influence Alzheimer's disease pathogenesis.

Synonyms:

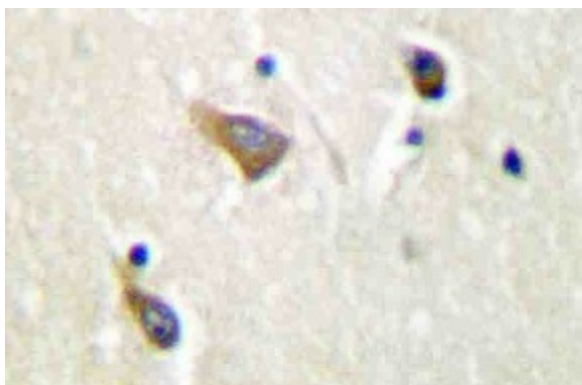
Clusterin, APOJ, CLI, KUB1, AAG4, NA1/NA2, SP-40,40

Protein Families:

Druggable Genome, Secreted Protein

Product images:


Western blot (WB) analysis of Clusterin- α antibody (Cat.-No.: [AP20482PU-N]) at 1/500 dilution Lane 1:HeLa cell lysate Lane 2:NIH-3T3 cell lysate Lane 3:H9C2 cell lysate



Immunohistochemistry (IHC) analyzes of Clusterin-alpha antibody (Cat.-No.: [AP20482PU-N]) in paraffin-embedded human brain tissue.