

## Product datasheet for **AP20481PU-M**

### **BARD1 Rabbit Polyclonal Antibody**

#### **Product data:**

Product Type:	Primary Antibodies
Applications:	IHC, WB
Recommended Dilution:	<b>Western blot:</b> 1/500-1/1000. <b>Immunohistochemistry on Paraffin Sections:</b> 1/50-1/200.
Reactivity:	Human
Host:	Rabbit
Clonality:	Polyclonal
Specificity:	This antibody detects endogenous levels of BARD1 protein. (region surrounding Arg8)
Formulation:	Phosphate buffered saline (PBS), pH~7.2 State: Aff - Purified State: Liquid purified Ig fraction (> 95% by SDS-PAGE) Preservative: 15 mM Sodium Azide
Concentration:	1.0 mg/ml
Purification:	Affinity Chromatography using epitope-specific immunogen
Conjugation:	Unconjugated
Storage:	Store undiluted at 2-8°C for one month or (in aliquots) at -20°C for longer. Avoid repeated freezing and thawing.
Stability:	Shelf life: one year from despatch.
Predicted Protein Size:	~ 85 kDa
Gene Name:	BRCA1 associated RING domain 1
Database Link:	<u><a href="#">Entrez Gene 580 Human</a></u> <u><a href="#">Q99728</a></u>



[View online »](#)

**Background:**

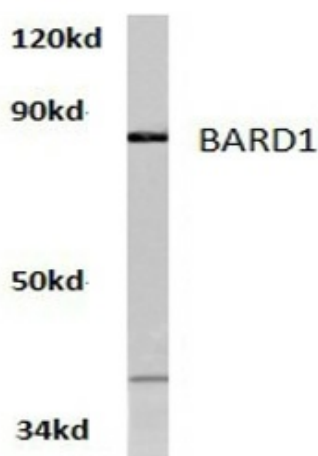
Mutations within the BRCA1 gene, localized to chromosome 17q, are believed to account for approximately 45% of families with increased incidence of both early-onset breast cancer and ovarian cancer. The BRCA1 gene is expressed in numerous tissues, including breast and ovary, and encodes a predicted protein of 1863 amino acids. This protein contains a RING domain near the N-terminus and appears to encode a tumor suppressor. BARD1 (BRCA1-associated RING domain protein 1) and BAP1 (BRCA1-associated protein 1) have both been shown to bind to the N-terminus of BRCA1 and are potential mediators of tumor suppression. BARD1 contains an N-terminal RING domain and three tandem ankyrin repeats. The C-terminus of BARD1 contains a region with sequence homology to BRCA1, termed the BRCT domain. BAP1 is an ubiquitin hydrolase and has been shown to enhance BRCA1-mediated cell growth suppression.

**Synonyms:**

BARD-1

**Protein Families:**

Druggable Genome

**Product images:**


Western blot analysis of BARD1 Antibody Cat.-No.- [AP20481PU-N] in extracts from HeLa cells at 1/500 dilution.