

## Product datasheet for **AP20478PU-M**

### Collagen V (COL5A1) Rabbit Polyclonal Antibody

#### Product data:

Product Type:	Primary Antibodies
Applications:	IF, IHC, WB
Recommended Dilution:	<b>Western blot:</b> 1/500 - 1/1000. <b>Immunohistochemistry:</b> 1/50 - 1/200. <b>Immunofluorescence.</b>
Reactivity:	Human
Host:	Rabbit
Clonality:	Polyclonal
Specificity:	This antibody detects endogenous levels of COL5A1 protein. (region surrounding Glu325)
Formulation:	Phosphate buffered saline (PBS) with 0.05% sodium azide, approx. pH 7.2. State: Aff - Purified State: Liquid purified Ig fraction
Concentration:	1.0 mg/ml
Purification:	Affinity chromatography (> 95% (by SDS-PAGE)
Conjugation:	Unconjugated
Storage:	Store undiluted at 2-8°C for one month or (in aliquots) at -20°C for longer. Avoid repeated freezing and thawing.
Stability:	Shelf life: one year from despatch.
Predicted Protein Size:	~ 180 kDa
Gene Name:	collagen type V alpha 1
Database Link:	<u><a href="#">Entrez Gene 1289 Human P20908</a></u>



[View online »](#)

**Background:**

The extensive family of COL gene products (collagens) is composed of several chain types, including fibril-forming interstitial collagens (types I, II, III and V) and basement membrane collagens (type IV), each type containing multiple isoforms. Collagens are fibrous, extracellular matrix proteins with high tensile strength and are the major components of connective tissue, such as tendons and cartilage. All collagens contain a triple helix domain and frequently show lateral self-association in order to form complex connective tissues. Several collagens also play a role in cell adhesion, important for maintaining normal tissue architecture and function.

**Synonyms:**

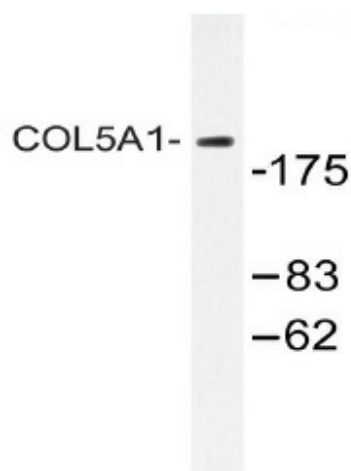
COL5A1

**Protein Families:**

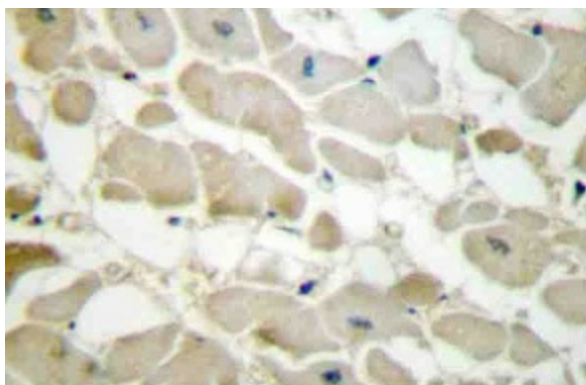
Druggable Genome

**Protein Pathways:**

ECM-receptor interaction, Focal adhesion

**Product images:**


Western blot (WB) analysis of COL5A1 antibody (Cat.-No.: [AP20478PU-N]) in extracts from HeLa cells.



Immunohistochemistry (IHC) analyzes of COL5A1 antibody (Cat.-No.: [AP20478PU-N]) in paraffin-embedded human heart tissue.