

## Product datasheet for **AP20477PU-N**

### Collagen IV (COL4A2) Rabbit Polyclonal Antibody

#### Product data:

Product Type:	Primary Antibodies
Applications:	IF, IHC, WB
Recommended Dilution:	<b>Western Blot:</b> 1/500 - 1/1000. <b>Immunohistochemistry on paraffin sections:</b> 1/50 - 1/200. <b>Immunofluorescence:</b> 1/50 - 1/200.
Reactivity:	Human, Mouse
Host:	Rabbit
Clonality:	Polyclonal
Specificity:	This antibody detects endogenous levels of COL4A2 protein. (region surrounding Pro175)
Formulation:	PBS, pH 7.2 State: Aff - Purified State: Liquid purified Ig fraction Preservative: 0.02% sodium azide, 50% glycerol
Concentration:	1.0 mg/ml
Purification:	Affinity chromatography (> 95% (by SDS-PAGE)
Conjugation:	Unconjugated
Storage:	Store undiluted at 2-8°C for one month or (in aliquots) at -20°C for longer. Avoid repeated freezing and thawing.
Stability:	Shelf life: one year from despatch.
Predicted Protein Size:	~150 kDa
Gene Name:	collagen type IV alpha 2
Database Link:	<a href="#">Entrez Gene 1284 Human P08572</a>



[View online »](#)

**Background:**

The extensive family of COL gene products (collagens) is composed of several chain types, including fibril-forming interstitial collagens (Types I, II, III and V) and basement membrane collagens (Type IV), each type containing multiple isoforms. Collagens are fibrous, extracellular matrix proteins with high tensile strength and are the major components of connective tissue, such as tendons and cartilage. All collagens contain a triple helix domain and frequently show lateral self-association in order to form complex connective tissues. Several collagens also play a role in cell adhesion, important for maintaining normal tissue architecture and function.

**Synonyms:**

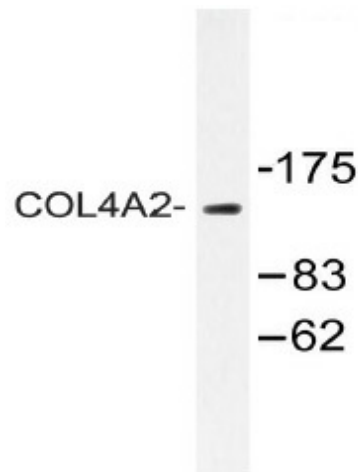
COL4A2

**Protein Families:**

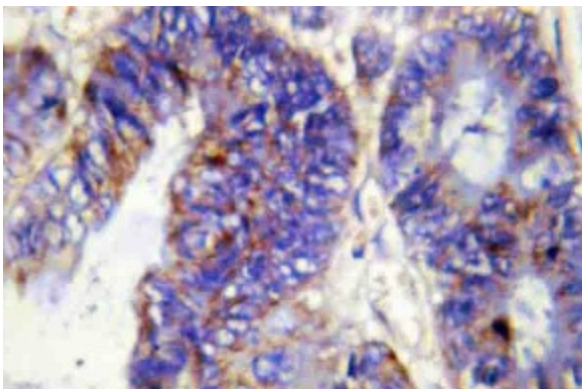
Transmembrane

**Protein Pathways:**

ECM-receptor interaction, Focal adhesion, Pathways in cancer, Small cell lung cancer

**Product images:**

Western blot (WB) analysis of COL4A2 antibody (Cat.-No.: AP20477PU-N) in extracts from Jurkat cells.



Immunohistochemistry (IHC) analyzes of COL4A2 antibody (Cat.-No.: AP20477PU-N) in paraffin-embedded human colon carcinoma tissue.