

Product datasheet for **AP20475PU-N**

BUB3 Rabbit Polyclonal Antibody

Product data:

Product Type:	Primary Antibodies
Applications:	IF, IHC, WB
Recommended Dilution:	Western blot: 1/500 - 1/1000. Immunohistochemistry on paraffin sections 1/50 - 1/200. Immunofluorescence: 1/50 - 1/200.
Reactivity:	Human, Mouse, Rat
Host:	Rabbit
Clonality:	Polyclonal
Immunogen:	Synthetic peptide, corresponding to amino acids 251-300 of Human BUB3.
Specificity:	This antibody detects endogenous levels of Bub3 protein. (region surrounding His274)
Formulation:	Phosphate buffered saline (PBS) with 0.05% sodium azide, approx. pH 7.2. State: Aff - Purified State: Liquid purified Ig fraction (> 95% pure by SDS-PAGE)
Concentration:	1.0 mg/ml
Purification:	Affinity Chromatography using epitope-specific immunogen
Conjugation:	Unconjugated
Storage:	Store undiluted at 2-8°C for one month or (in aliquots) at -20°C for longer. Avoid repeated freezing and thawing.
Stability:	Shelf life: one year from despatch.
Predicted Protein Size:	~ 40 kDa
Gene Name:	BUB3, mitotic checkpoint protein
Database Link:	<u>Entrez Gene 12237 Mouse</u> <u>Entrez Gene 361662 Rat</u> <u>Entrez Gene 9184 Human</u> <u>O43684</u>



[View online »](#)

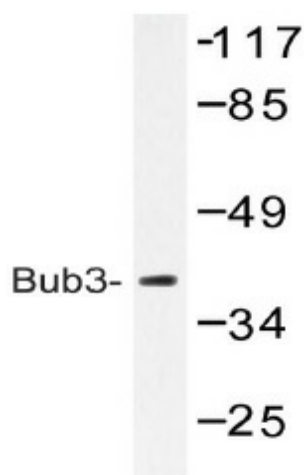
Background: The mitotic checkpoint protein Bub3 appears to be essential during normal mitotic progression, preventing premature sister chromatid separation, missegregation and aneuploidy. Bub3 is also important during G2 and early mitosis stages, promoting normal mitotic entry. Loss of Bub3 function causes slower progression through prophase, apparently due to mitotic cyclins A and B not being accumulated.

Synonyms: BUB3L; hBUB3

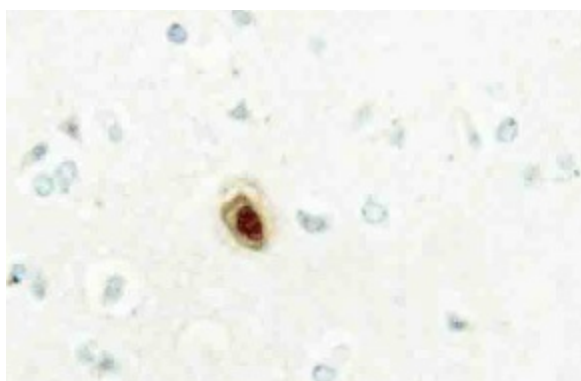
Protein Families: Druggable Genome

Protein Pathways: Cell cycle

Product images:



Western blot (WB) analysis of Bub3 antibody (Cat.-No.: AP20475PU-N) in extracts from HeLa cells.



Immunohistochemistry (IHC) analyzes of Bub3 antibody (Cat.-No.: AP20475PU-N) in paraffin-embedded human brain tissue.