

## Product datasheet for **AP20472PU-N**

### 5HT4 Receptor (HTR4) Rabbit Polyclonal Antibody

#### Product data:

Product Type:	Primary Antibodies
Applications:	IF, IHC, WB
Recommended Dilution:	<b>Western blot:</b> 1/500-1/1000. <b>Immunofluorescence:</b> 1/50-1/200. <b>Immunohistochemistry on Paraffin Sections:</b> 1/50-1/200.
Reactivity:	Human
Host:	Rabbit
Clonality:	Polyclonal
Specificity:	This antibody detects endogenous levels of SR-4 protein. (region surrounding Asp47)
Formulation:	Phosphate buffered saline (PBS), pH 7.2. State: Aff - Purified State: Liquid purified Ig fraction (> 95% pure by SDS-PAGE) Preservative: 15mM Sodium Azide
Concentration:	1.0 mg/ml
Purification:	Affinity Chromatography using epitope-specific immunogen
Conjugation:	Unconjugated
Storage:	Store undiluted at 2-8°C for one month or (in aliquots) at -20°C for longer. Avoid repeated freezing and thawing.
Stability:	Shelf life: one year from despatch.
Predicted Protein Size:	~ 48 kDa
Gene Name:	5-hydroxytryptamine receptor 4
Database Link:	<a href="#">Entrez Gene 3360 Human</a> <a href="#">Q13639</a>



[View online »](#)

**Background:**

Serotonin (also designated 5-hydroxytryptamine or 5-HT) is a molecule that functions as a neurotransmitter, a hormone and a mitogen, and it is predominantly expressed in the gut, platelets and central nervous system (CNS). In the CNS, serotonin modulates several processes, including anxiety, sleep, appetite, behavior and drug abuse. In platelets and gut, serotonin plays a major role in cardiovascular function and motility of the gastrointestinal tract, respectively. Serotonin mediates its effects through several of G protein coupled receptors, designated 5-HT receptors or alternatively SR receptors. SR-3 is a ligand-gated ion channel, whereas all other known serotonin receptor subtypes are G protein-coupled receptors. The gene which encodes SR-3 maps to human chromosome 11q23.1-q23.2. SR-4 mediates widespread effects in central and peripheral nervous systems. The gene which encodes SR-4 maps to human chromosome 5q31-q33. SR-7 belongs to the superfamily of G protein-coupled receptors. The gene which encodes SR-7 maps to human chromosome 10q21-q24.

**Synonyms:**

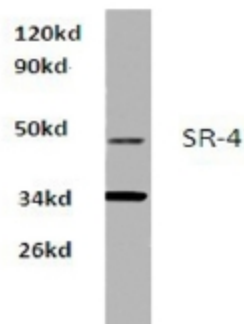
5-hydroxytryptamine receptor 4, 5-HT4, 5-HT-4

**Protein Families:**

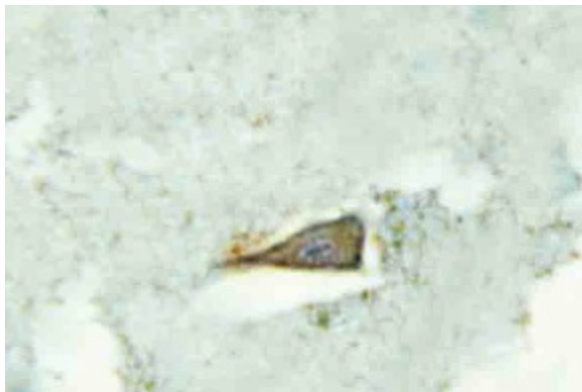
Druggable Genome, GPCR, Transmembrane

**Protein Pathways:**

Calcium signaling pathway, Neuroactive ligand-receptor interaction

**Product images:**

Western blot analysis of SR-4 Antibody (Cat.-No AP20472PU-N) in extracts from Hela cells at 1/500 dilution.



Immunohistochemistry analysis of SR-4 Antibody (Cat.-No AP20472PU-N) in paraffin-embedded human brain tissue.